

Vacular Plants of Rose Valley, Ventura County, California

By David L. Magney

Scientific Name	Common Name	Habit	Wetland Indicator		Voucher
			Status	Family	
<i>Acmispon americanus</i> (Nuttall) Rydb. var. <i>americanus</i>	American Birds-foot Trefoil	AH	UPL	Fabaceae	Magney observation
<i>Acmispon brachycarpus</i> (Bentham) D.D. Sokoloff	Hill Lotus	AH	.	Fabaceae	Burgess & P. Munro 10568 SBBG
<i>Acmispon denticulatus</i> (Drew) D.D. Sokoloff	White Lotus	AH	.	Fabaceae	Varnava & Fraga 575 RSA
<i>Acmispon procumbens</i> (E. Greene) Brouillet var. <i>procumbens</i>	Silky California Broom	PH	.	Fabaceae	Varnava & Fraga 583 RSA
<i>Acmispon wrangelianus</i> (Fischer & C. Meyer) D.D. Sokoloff	Chile Lotus or Hosackia	AH	.	Fabaceae	Secrest sn 1-Jun-1955 SBBG
* <i>Acroptilon repens</i> (L.) DC. *	Russian Knapweed	AH	.	Asteraceae	Chandler 3804 SBBG
<i>Adenostoma fasciculatum</i> Hook. & Arn. var. <i>fasciculatum</i>	Chamise	S	.	Rosaceae	Magney observation
<i>Agoseris grandiflora</i> (Nutt.) Greene var. <i>grandiflora</i>	Bigflower [Mountain] Dandelion	PH	.	Asteraceae	Magney observation
<i>Agoseris heterophylla</i> (Nutt.) Greene var. <i>heterophylla</i>	Mountain Dandelion	AH	.	Asteraceae	Secrest sn 1-Jun-1955 SBBG
<i>Agoseris retrorsa</i> (Bentham) E. Greene	Spear-leaved Mountain Dandelion	PH	.	Asteraceae	Magney observation
* <i>Agrostis stolonifera</i> L. [var. <i>palustris</i> (Hudson) Pers.] *	Creeping Bentgrass	PG	FACW	Poaceae	Varnava & Fraga 594 RSA
* <i>Aira caryophyllea</i> L. *	Silver Hairgrass	AG	FACU	Poaceae	217-01
<i>Allium diabolense</i> (Traub) D. McNeal	Diablo Onion	PG	.	Alliaceae	Hardham 4378 CAS
<i>Allium fimbriatum</i> S. Watson var. <i>fimbriatum</i>	Fringed Onion	PG	.	Alliaceae	Hardham 4377 CAS
<i>Allophyllum gilioides</i> ssp. <i>violaceum</i> (A.A. Heller) Day	Violet Phlox	AH	FAC	Polemoniaceae	Varnava & Columbus 305 RSA
<i>Allophyllum glutinosum</i> (Bentham) A.D. Grant & V. Grant	Sticky Allophyllum	AH	.	Polemoniaceae	Hardham 6123 RSA
<i>Allophyllum integrifolium</i> (Brand) A.D. Grant & V. Grant	Sticky Allophyllum	AH	.	Polemoniaceae	Varnava & Columbus 298 RSA
<i>Alnus rhombifolia</i> Nuttall	White Alder	T	FACW	Betulaceae	Magney observation
* <i>Amaranthus albus</i> L. *	Pigweed Amaranth	AH	FACU	Amaranthaceae	Burgess & Munro 2114 SBBG
<i>Amaranthus californicus</i> (Moq.) S. Watson	California Amaranth	AH	FACW	Amaranthaceae	Burgess & Munro 2113 SBBG
<i>Amorpha californica</i> Nuttall var. <i>californica</i>	California False Indigo	S	FAC	Fabaceae	Holt sn 29-Jun-1937 SBBG
<i>Amsinckia tessellata</i> Gray var. <i>tessellata</i>	Devil's Lettuce	AH	.	Boraginaceae	Magney observation
<i>Ancistrocarphus filagineus</i> Gray	Woolly Fishhooks	AH	.	Asteraceae	Secrest sn 1-Jun-1955 SBBG
<i>Antirrhinum [multiflorum] thompsonii</i> D.J. Keil	Sticky Snapdragon	S	.	Plantaginaceae	Magney observation
<i>Apocynum androsaemifolium</i> L.	Bitter Dogbane	PH	UPL	Apocynaceae	iNaturalist
<i>Apocynum cannabinum</i> L.	Indian Hemp	PH	FAC	Apocynaceae	227-01
<i>Aquilegia formosa</i> var. <i>truncata</i> (Fischer & C.A. Meyer) Baker	Truncate Crimson Columbine	PH	FAC	Ranunculaceae	584-02
<i>Arctostaphylos glandulosa</i> Eastw. ssp. <i>glandulosa</i>	Eastwood Manzanita	S	.	Ericaceae	Dearing 1276 SBBG
<i>Arctostaphylos glandulosa</i> ssp. <i>mollis</i> (J.E. Jones) P. Wells	Santa Ynez Mountains Manzanita	S	.	Ericaceae	Hardham 4384 CAS
<i>Arctostaphylos glauca</i> Lindley	Bigberry Manzanita	S	.	Ericaceae	Van Rensselaer sn 18-Aug-1936 SBBG
<i>Arctostaphylos parryana</i> Lemmon ssp. <i>parryana</i>	Parry Manzanita	S	.	Ericaceae	Van Rensselaer sn 15-May-1938 SBBG
<i>Artemisia californica</i> Less.	California Sagebrush	S	.	Asteraceae	Magney observation
<i>Artemisia douglasiana</i> Besser	Mugwort	PH	FAC	Asteraceae	Magney observation
<i>Artemisia dracunculus</i> L.	Tarragon, Dragon Tarragon	PH	(FACW)	Asteraceae	Varnava & Fraga 588 RSA
<i>Artemisia tridentata</i> Nuttall ssp. <i>tridentata</i>	Great Basin Sagebrush	S	.	Asteraceae	Magney observation
<i>Artemisia tridentata</i> ssp. <i>vaseyana</i> (Rydb.) Beetle	Vasey Great Basin Sagebrush	S	.	Asteraceae	Magney observation
<i>Asclepias californica</i> E. Greene ssp. <i>californica</i>	California Milkweed	AH	.	Apocynaceae	Magney observation
<i>Asclepias fascicularis</i> Decne.	Narrowleaf Milkweed	PH	FAC	Apocynaceae	Varnava & Fraga 598 RSA
<i>Astragalus didymocarpus</i> Hook. & Arn. var. <i>didymocarpus</i>	Two-seeded Milkvetch	AH	.	Fabaceae	Secrest sn 1-Jun-1955 SBBG
<i>Astragalus didymocarpus</i> var. <i>obispoensis</i> (Rydb.) Jeps.	San Luis Obispo Two-seeded Milkvetch	AH	.	Fabaceae	Hardham 4387 CAS
<i>Astragalus lentiginosus</i> var. <i>idriensis</i> M.E. Jones	Idria Freckled Locoweed	PH	UPL	Fabaceae	Hardham 5690 CAS
<i>Astragalus purshii</i> var. <i>tinctus</i> M.E. Jones	Pursh Woollypod	PH	.	Fabaceae	Magney observation
* <i>Avena barbata</i> Link. *	Slender Wild Oat	AG	.	Poaceae	Varnava & Columbus 291 RSA

This checklist may be reproduced for educational or scientific purposes only, with full credit given to the author.

David L. Magney, P.O. Box 1539, Cedar Ridge, CA 95924. www.magney.org

Vacular Plants of Rose Valley, Ventura County, California

By David L. Magney

Scientific Name	Common Name	Habit	Wetland Indicator		Voucher
			Status	Family	
<i>Barbarea orthoceras</i> Ledeb.	American Wintercress	BH	FACW	Brassicaceae	<i>Secrest sn 1-Jun-1955</i> SBBG
<i>Boechera breweri</i> (S. Watson) Al-Shehbaz var. <i>breweri</i>	Brewer Rock Cress	PH	.	Brassicaceae	<i>Hardham 10332</i> RSA
<i>Boykinia occidentalis</i> T. & G.	Santa Lucia Brookfoam	PH	FAC	Saxifragaceae	<i>Hardham 6114</i> CAS
* <i>Brassica nigra</i> (L.) Koch *	Black Mustard	AH	.	Brassicaceae	Magney observation
<i>Brickellia californica</i> (T. & G.) Gray	California Brickellbush	S	FACU	Asteraceae	<i>Varnava & Fraga 578</i> RSA
<i>Brodiaea terrestris</i> ssp. <i>kernensis</i> (Hoover) Niehaus	Harvest Brodiaea	PG	.	Themidaceae	<i>Hardham 3802</i> SBBG
* <i>Bromus diandrus</i> Roth. ssp. <i>diandrus</i> *	Ripgut Grass	AG	(FACU)	Poaceae	Magney observation
* <i>Bromus hordeaceus</i> L. ssp. <i>hordeaceus</i> *	Soft Chess	AG	FACU	Poaceae	<i>218-01, 198-19</i>
* <i>Bromus rubens</i> L. *	Red Brome	AG	UPL	Poaceae	<i>Varnava & Columbus 277</i> RSA
<i>Bromus sitchensis</i> var. <i>carinatus</i> (Hook. & Arn.) R.E. Brainerd & Otting	California Brome	PG	.	Poaceae	<i>Varnava & Columbus 300</i> RSA
* <i>Bromus tectorum</i> L. *	Downy Brome, Cheat Grass	AG	.	Poaceae	<i>Varnava & Columbus 276</i> RSA
<i>Calochortus venustus</i> Benth.	Butterfly Mariposa Lily	PG	.	Liliaceae	<i>Varnava & Columbus 284</i> RSA
<i>Calyptidium monandrum</i> Nuttall	Common Calyptidium, Sand Cress	AH	.	Montiaceae	Magney observation
<i>Calyptidium parryi</i> Gray var. <i>parryi</i>	Parry Calyptidium	AH	.	Montiaceae	<i>Hardham 4382</i> SBBG
<i>Calyptidium</i> sp. nova	new Pussypaws	AH	.	Montiaceae	<i>206-19</i>
<i>Calystegia malacophylla</i> ssp. <i>pedicellata</i> (Jepson) Munz	Sierra Morning-glory	PV	.	Convolvulaceae	<i>Burgess 9305</i> SBBG
<i>Camissonia strigulosa</i> (Fischer & C. Meyer) Raven	Strigose Primrose	AH	.	Onagraceae	<i>Secrest sn 1-Jun-1955</i> SBBG
<i>Camissoniopsis bistorta</i> (Torr. & A. Gray) W.L. Wagner & Hoch	California or Southern Sun-cups	AH	.	Onagraceae	<i>242-01</i>
<i>Camissoniopsis intermedia</i> (P.H. Raven) W.L. Wagner & Hoch	Intermediate Sun Cups	AH	.	Onagraceae	<i>Varnava & Columbus 282</i> RSA
<i>Carex alma</i> L. Bailey	Sturdy Sedge	PG	OBL	Cyperaceae	<i>Smith 10024</i> SBBG
<i>Castilleja minor</i> ssp. <i>spiralis</i> (Jeps.) Chuang & Heckard	Large-flowered Annual Indian Paintbrush	AH	OBL	Orobanchaceae	<i>Varnava & Fraga 601</i> RSA
<i>Castilleja subinclusa</i> E. Greene ssp. <i>subinclusa</i>	Long-leaved or Jepson Indian Paintbrush	PH	.	Orobanchaceae	<i>Hardham 4386</i> JEPS
<i>Ceanothus crassifolius</i> Torrey var. <i>crassifolius</i>	Snowball, Hoaryleaf Ceanothus	S	.	Rhamnaceae	<i>Sowder 340</i> UC
<i>Ceanothus crassifolius</i> var. <i>planus</i> Abrams	Flatleaf Snowball	S	.	Rhamnaceae	<i>Sowder 340</i> UC
<i>Ceanothus leucodermis</i> E. Greene	Chaparral Whitethorn	S	.	Rhamnaceae	<i>Sowder 339</i> UC
<i>Ceanothus palmeri</i> Trel.	Palmer Ceanothus	S	.	Rhamnaceae	<i>Van Rensselaer sn 15-May-1938</i> SBBG
* <i>Centaurea benedicta</i> (L.) L. * [<i>Cnicus benedictus</i> L.]	Blessed Thistle	AH	.	Asteraceae	<i>Secrest sn 1-Jun-1955</i> SBBG
* <i>Centaurea melitensis</i> L. *	Tocalote, Napa Thistle	AH	.	Asteraceae	Magney observation
* <i>Centaurea solstitialis</i> L. *	Yellow Star-thistle	AH	.	Asteraceae	Magney observation
<i>Cercocarpus betuloides</i> Torrey & A. Gray var. <i>betuloides</i>	Birchleaf Mountain Mahogany	S	.	Rosaceae	Magney observation
<i>Chaenactis glabriuscula</i> DC. var. <i>glabriuscula</i>	Common Yellow Pincushion	AH	.	Asteraceae	<i>207-19</i>
<i>Chaenactis glabriuscula</i> var. <i>lanosa</i> (DC.) H.M. Hall	Woolly Yellow Pincushion	AH	.	Asteraceae	<i>Hardham 5784</i> SBBG
<i>Chamaesyce serpyllifolia</i> (Pers.) Small ssp. <i>serpyllifolia</i>	Thyme-leaved Spurge	AH	.	Euphorbiaceae	<i>Smith 10026</i> SBBG
* <i>Chenopodium album</i> L. *	Lamb's Quarters, Pigweed, White Goosefoot	AH	FACU	Chenopodiaceae	Magney observation
<i>Chenopodium californicum</i> (S. Watson) S. Watson	California Goosefoot, Soap Plant	PH	.	Chenopodiaceae	<i>Varnava & Fraga 602</i> RSA
<i>Chorizanthe clevelandii</i> C. Parry	Cleveland Spineflower	AH	.	Polygonaceae	<i>Secrest sn 1-Jun-1955</i> SBBG
<i>Chorizanthe staticoides</i> Bentham var. <i>staticoides</i>	Turkish Rugging, Statice Spineflower	AH	.	Polygonaceae	<i>Smith 10040</i> SBBG
<i>Cirsium occidentale</i> var. <i>venustum</i> (E. Greene) Jepson	Red or Venus Thistle	BH	.	Asteraceae	<i>Pollard sn 17-Sep-1965</i> CAS
<i>Clarkia bottae</i> (Spach) Lewis & Lewis	Punchbowl Godetia	AH	.	Onagraceae	<i>Hardham 6127</i> RSA
<i>Clarkia cylindrica</i> (Jepson) H. Lewis & M. Lewis ssp. <i>cylindrica</i>	Cylindrical Godetia	AH	.	Onagraceae	Magney observation
<i>Clarkia heterandra</i> (Torrey) H. Lewis & Raven	California Gaura	AH	.	Onagraceae	<i>Hardham 6124</i> SBBG
<i>Clarkia purpurea</i> ssp. <i>quadrivulnera</i> (Douglas) H. Lewis & M. Lewis	Four-spotted Purple Clarkia	AH	.	Onagraceae	Magney observation
<i>Clarkia rhomboidea</i> Douglas	Rhomboid Clarkia	AH	.	Onagraceae	<i>232-01</i>

This checklist may be reproduced for educational or scientific purposes only, with full credit given to the author.

David L. Magney, P.O. Box 1539, Cedar Ridge, CA 95924. www.magney.org

Vacular Plants of Rose Valley, Ventura County, California

By David L. Magney

Scientific Name	Common Name	Habit	Wetland Indicator		Voucher
			Status	Family	
<i>Clematis lasiantha</i> Nuttall	Pipestem Clematis	PV	.	Ranunculaceae	Magney observation
<i>Clematis ligusticifolia</i> Nuttall	Virgin's Bower, Old Man's Beard	PV	FAC	Ranunculaceae	581-02
<i>Collinsia parryi</i> A. Gray	Parry Blue-eyed Mary	AH	.	Plantaginaceae	Hardham 5686 JEPS
<i>Conyza canadensis</i> (L.) Cronq.	Horseweed	AH	FACU	Asteraceae	Varnava & Fraga 605 RSA
<i>Cordylanthus rigidus</i> (Benth.) Jepson ssp. <i>rigidus</i>	Rigid Bird's Beak	AH	.	Orobanchaceae	Varnava & Fraga 573 RSA
<i>Corethrogyne filaginifolia</i> (Hook. & Arn.) Nutt. var. <i>filaginifolia</i>	California Cudweed-aster	PH	.	Asteraceae	Burgess 2115 SBBG
<i>Cornus glabrata</i> Bentham	Brown Dogwood	S	FACW	Cornaceae	Smith 5597 SBBG
<i>Cryptantha hispidissima</i> Greene	Bristly Forget-Me-Not	AH	.	Boraginaceae	Burgess 7537 SBBG
<i>Cryptantha intermedia</i> (A. Gray) E. Greene var. <i>intermedia</i>	Common Forget-Me-Not	AH	.	Boraginaceae	239-01, 203-19
<i>Cryptantha microstachys</i> (A. Gray) E. Greene	Tejon Forget-Me-Not	AH	.	Boraginaceae	Burgess 4520 SBBG
<i>Cryptantha torreyana</i> (A. Gray) E. Greene var. <i>torreyana</i>	Torrey Forget-Me-Knot	AH	.	Boraginaceae	Chandler 3809 POM
<i>Cuscuta californica</i> Hooker & Arnott var. <i>californica</i>	California Dodder	AV	.	Convolvulaceae	iNaturalist
<i>Cuscuta subinclusa</i> Durand & Hilg.	Canyon Dodder	AV	.	Convolvulaceae	Varnava et al. 32 RSA
<i>Datisca glomerata</i> (C. Presl) Baillon	Durango Root	PH	FACW	Datisceae	Elias 12259 RSA
<i>Delphinium cardinale</i> Hooker	Scarlet or Cardinal Larkspur	PH	.	Ranunculaceae	Magney observation
<i>Delphinium parishii</i> ssp. <i>pallidum</i> (Munz) M.J. Warnock	Pale-flowered Larkspur	PH	.	Ranunculaceae	Hardham 5689 CAS
<i>Delphinium parryi</i> ssp. <i>purpureum</i> (F. Lewis & Epling) M.J. Warnock	Mount Pinos Larkspur	PH	.	Ranunculaceae	Hardham 5689 CAS
<i>Dendromecon rigida</i> Bentham ssp. <i>rigida</i>	Bush Poppy	S	.	Papaveraceae	Varnava & Fraga 591 RSA
<i>Diplacus bolanderi</i> (A. Gray) Nesom	Bolander Monkeyflower	AH	.	Phrymaceae	Hardham 6106 JEPS
<i>Diplacus brevipes</i> (Bentham) Nesom	Short or Wide-throat Monkeyflower	AH	.	Phrymaceae	Sowder 207 UC
<i>Diplacus constrictus</i> (A.L. Grant) Nesom	Narrow-throated Monkeyflower	AH	.	Phrymaceae	Hardham 6119 RSA
<i>Diplacus constrictus</i> X <i>Diplacus johnstonii</i>	Hybrid Narrow-throated Monkeyflower	AH	.	Phrymaceae	Hardham 6119 JEPS
<i>Dipterostemon capitatus</i> (Bentham) Rydb. ssp. <i>capitatus</i>	Blue Dicks	PG	FACU	Themidaceae	Varnava & Columbus 287 RSA
<i>Drymocallis glandulosa</i> (Lindley) Rydberg var. <i>glandulosa</i>	Sticky Cinqufoil	PH	FAC	Rosaceae	Varnava & Columbus 304 RSA
<i>Dudleya cymosa</i> (Lem.) Britton & Rose ssp. <i>cymosa</i>	Canyon Live-forever	PH	.	Crassulaceae	Lefebure 630 SBBG
<i>Eleocharis macrostachya</i> Britt.	Common Spikerush	PG	OBL	Cyperaceae	221-01, 244-01
<i>Eleocharis parishii</i> Britt.	Parish Spikerush	PG	FACW	Cyperaceae	Smith sn 19-Jun-1968 SBBG
<i>Elodea canadensis</i> Rich.	Common Waterweed	PG	OBL	Hydrocharitaceae	224-01
* <i>Elymus caput-medusae</i> L.*	Medusa Head	PG	.	Poaceae	Varnava & Columbus 296 RSA
<i>Elymus elymoides</i> (Raf.) Swezey ssp. <i>elymoides</i>	Bottlebrush Squirreltail	PG	FACU	Poaceae	Magney observation
<i>Elymus glaucus</i> Buckl. ssp. <i>glaucus</i>	Blue or Woodland Wildrye	PG	FACU	Poaceae	Varnava & Columbus 303 RSA
<i>Elymus triticoides</i> Buckl. ssp. <i>triticoides</i>	Creeping Wildrye	PG	FAC	Poaceae	Varnava & Columbus 292 RSA
<i>Emmenanthe penduliflora</i> Bentham var. <i>penduliflora</i>	Whispering Bells	AH	.	Hydrophyllaceae	Sowder 341 UC
<i>Epilobium brachycarpum</i> C. Presl	Panicled Willow-herb	AH	.	Onagraceae	Hardham 6111 JEPS
<i>Epilobium canum</i> (Greene) Raven ssp. <i>canum</i>	California Fuchsia	PH	.	Onagraceae	Varnava & Fraga 576 RSA
<i>Epilobium canum</i> ssp. <i>latifolium</i> (Hook.) Raven	Broad-leaved California Fuchsia	PH	.	Onagraceae	Magney observation
<i>Epilobium ciliatum</i> Raf. ssp. <i>ciliatum</i>	Northern Willow-herb	AH	FACW	Onagraceae	Smith 10037 SBBG
<i>Epilobium foliosum</i> (Torrey & A. Gray) Suksd.	Leafy Spike-primrose	AH	.	Onagraceae	Hardham 6126 RSA
<i>Epilobium minutum</i> Lindley ex Lehm.	Chaparral Willowherb	AH	FACU	Onagraceae	Smith 1998
<i>Eremothera boothii</i> ssp. <i>decorticans</i> (Hooker & Arnott) W.L. Wagner & Hoch	Booth Shreading Primrose	AH	.	Onagraceae	Hardham 10338 RSA
<i>Eriastrum sapphirinum</i> ssp. <i>dasyanthem</i> (Brand) H. Mason	Shaggy-flowered Sapphire Woolly Star	AH	.	Polemoniaceae	Varnava & Fraga 589 RSA
<i>Erigeron foliosus</i> Nuttall var. <i>foliosus</i>	Leafy Fleabane or Daisy	PH	.	Asteraceae	Varnava & Fraga 577 RSA
<i>Eriodictyon crassifolium</i> Bentham var. <i>crassifolium</i>	Thickleaf Yerba Santa	S	.	Namaceae	Smith 10032 SBBG

This checklist may be reproduced for educational or scientific purposes only, with full credit given to the author.

David L. Magney, P.O. Box 1539, Cedar Ridge, CA 95924. www.magney.org

Vacular Plants of Rose Valley, Ventura County, California

By David L. Magney

Scientific Name	Common Name	Habit	Wetland Indicator		Voucher
			Status	Family	
<i>Eriodictyon crassifolium</i> var. <i>nigrescens</i> Brand	Sticky Thickleaf Yerba Santa	S	.	Namaceae	Chandler 3805 SBBG
<i>Eriogonum cithariforme</i> S. Watson var. <i>cithariforme</i>	Cithara Buckwheat	AH	.	Polygonaceae	Hardham 4348 RSA
<i>Eriogonum cithariforme</i> var. <i>agninum</i> (E. Greene) Reveal	Santa Ynez Wild Buckwheat	AH	.	Polygonaceae	Burgess et al. 9304 SBBG
<i>Eriogonum davidsonii</i> E. Greene	Davidson Buckwheat	AH	.	Polygonaceae	Schall sn 2-Sep-1960 CDA
<i>Eriogonum hirtiflorum</i> S. Watson	Hairy-flowered Buckwheat	AH	.	Polygonaceae	Hardham 6112 RSA
<i>Eriogonum inerme</i> var. <i>hispidulum</i> Goodman	Goodman's Unarmed Wild Buckwheat	AH	.	Polygonaceae	Hardham 6112 CAS
<i>Eriogonum nudum</i> var. <i>pauciflorum</i> S. Watson	Tibinagua	PH	.	Polygonaceae	Varnava et al. 27 RSA
<i>Eriogonum vimineum</i> Benth.	Wicker Buckwheat	AH	.	Polygonaceae	Dearing 132 SBBG
<i>Eriogonum wrightii</i> var. <i>subscaposum</i> S. Watson	Short-scape Wright Buckwheat	S	.	Polygonaceae	322-21
<i>Eriophyllum confertiflorum</i> (DC.) A. Gray var. <i>confertiflorum</i>	Golden Yarrow	PH	.	Asteraceae	Varnava & Fraga 585 RSA
* <i>Erodium cicutarium</i> (L.) L'Her. *	Redstem Filaree	AH	.	Geraniaceae	Magney observation
<i>Erysimum capitatum</i> (Dougl.) E. Greene var. <i>capitatum</i>	Western Wallflower	AH/BH	.	Brassicaceae	Sowder 338 UC
<i>Erythranthe</i> [<i>Mimulus</i>] <i>androsacea</i> (Greene) N.S. Fraga	Naked Sepal Monkeyflower	AH	.	Phrymaceae	Hardham 5388 RSA
<i>Erythranthe cardinalis</i> (Douglas ex Benth.) Spach	Scarlet Monkeyflower	PH	FACW	Phrymaceae	Magney observation
<i>Erythranthe guttata</i> (Fischer ex DC.) Nesom [<i>Mimulus guttatus</i> DC.]	Common Streamside Monkeyflower	A/PH	OBL	Phrymaceae	216-01, 200-19
<i>Erythranthe suksdorfii</i> (A. Gray) N.S. Fraga	Suksdorf Monkeyflower	AH	FACU	Phrymaceae	Hardham 5388 JEPS
<i>Frangula californica</i> (Eschsch.) A. Gray ssp. <i>californica</i>	California Coffeeberry	S	.	Rhamnaceae	Varnava & Fraga 593 RSA
<i>Frangula californica</i> ssp. <i>tomentella</i> (Benth.) Kartesz & Gandhi	Hoary Coffeeberry	S	.	Rhamnaceae	231-01
<i>Frasera neglecta</i> H.M. Hall	Pine Green Gentian	PH	.	Gentianaceae	Hardham 5692 SBBG
<i>Fraxinus velutina</i> Torrey	Velvet or Arizona Ash	T	FAC	Oleaceae	Magney observation
<i>Galium andrewsii</i> A. Gray ssp. <i>andrewsii</i>	Pine Mat, Phlox-leaved Bedstraw	PH	.	Rubiaceae	237-01
<i>Galium andrewsii</i> ssp. <i>intermedium</i> Dempster & Stebb.	Intermediate Pine Mat, Phlox-leaved Bedstraw	PH	.	Rubiaceae	Varnava & Columbus 297 RSA
<i>Galium aparine</i> L.	Goose Grass	AH	FACU	Rubiaceae	233-01
<i>Galium hallii</i> Munz & I.M. Johnston	Nodding Bedstraw	PH	.	Rubiaceae	Hardham 6105 JEPS
<i>Gayophytum diffusum</i> ssp. <i>parviflorum</i> H. Lewis & J. Szwedkowski	Diffuse Gayophytum	AH	.	Onagraceae	Smith 10039 SBBG
<i>Gayophytum humile</i> A.L. Juss.	Low Gayophytum	AH	FAC	Onagraceae	Burgess & Munro 6895 SBBG
<i>Gilia achilleifolia</i> Benth. ssp. <i>achilleifolia</i>	Yarrow-leaved Gilia	AH	.	Polemoniaceae	202-19
<i>Gilia ochroleuca</i> ssp. <i>bizonata</i> A. & V. Grant	Desert Gilia	AH	.	Polemoniaceae	Hardham 5774 RSA
<i>Githopsis diffusa</i> A. Gray ssp. <i>diffusa</i>	Southern Bluecup	AH	FAC	Campanulaceae	Hardham 10336 RSA
<i>Githopsis diffusa</i> ssp. <i>robusta</i> Morin	San Gabriel Bluecup	AH	.	Campanulaceae	Burgess & Munro 6894 SBBG
<i>Gnaphalium palustre</i> Nuttall	Lowland Cudweed	AH	FACW	Asteraceae	234-01, 204-19
<i>Gutierrezia sarothrae</i> (Pursh) Britton & Rusby	Broom Snakeweed	S	.	Asteraceae	Burgess 2107 SBBG
<i>Heuchera caespitosa</i> Eastw.	Urn-flowered Alumroot	PH	.	Saxifragaceae	Hardman 10333 CAS
* <i>Hirschfeldia incana</i> (L.) Lagr.-Fossat *	Summer Mustard	PH	(FACU)	Brassicaceae	Varnava & Columbus 283 RSA
<i>Hordeum brachyantherum</i> ssp. <i>californicum</i> (Covas & Stebb.) v. Bothner et al.	California Barley	AG	FACW	Poaceae	Burgess et al. 9297 SBBG
* <i>Hordeum marinum</i> ssp. <i>gussoneanum</i> (Parl.) Thell. *	Mediterranean Barley	AG	FAC	Poaceae	236-01
<i>Horkelia rydbergii</i> Elmer	Rydberg Horkelia	PH	(FACU)	Rosaceae	249-08
<i>Johnstonella micromeres</i> (A. Gray) Hasenstab & M.G. Simpson [<i>Cryptantha m.</i>]	Minute-flowered Forget	AH	.	Boraginaceae	Burgess 4521 SBBG
<i>Juncus bufonius</i> L. var. <i>bufonius</i>	Common Toad Rush	AG	FACW	Juncaceae	199-19
<i>Juncus effusus</i> ssp. <i>austrocalifornicus</i> H.L. Lint ex Zita	Pacific Rush	PG	FACW	Juncaceae	583-02
<i>Juncus macrophyllus</i> Cov.	Large-leaf Rush	PG	FACW	Juncaceae	229-01
<i>Juncus mexicanus</i> Willd. ex Schultes & Schultes.f.	Mexican Rush, Wire Grass	PG	FACW	Juncaceae	Varnava 1065 RSA
<i>Juncus xiphioides</i> E. Meyer	Iris-leaved Rush	PG	OBL	Juncaceae	Varnava & Fraga 581 RSA

This checklist may be reproduced for educational or scientific purposes only, with full credit given to the author.

David L. Magney, P.O. Box 1539, Cedar Ridge, CA 95924. www.magney.org

Vacular Plants of Rose Valley, Ventura County, California

By David L. Magney

Scientific Name	Common Name	Habit	Wetland Indicator		Family	Voucher
			Status			
<i>Juniperus californica</i> Carrière	California Juniper	S	.		Cupressaceae	11-84
<i>Keckiella ternata</i> var. <i>septentrionalis</i> (Munz & Johnston) N. Holmgren	Blue-stemmed Bush Penstemon	S	.		Plantaginaceae	235-01
* <i>Lactuca serriola</i> L. *	Prickly Wild Lettuce	AH	FACU		Asteraceae	Varnava & Fraga 596 RSA
<i>Lagophylla ramosissima</i> Nutt. ssp. <i>ramosissima</i>	Common Hareleaf	AH	.		Asteraceae	321-21
* <i>Lepidium appelianum</i> Al-Shehbaz [<i>Cardaria pubescens</i>] *	White-top	PH	UPL		Brassicaceae	197-19
* <i>Lepidium campestre</i> (L.) R.Br. *	Peppergrass	A/BH	.		Brassicaceae	215-01
<i>Lepidium dictyotum</i> A. Gray	Veiny Peppergrass	AH	FAC		Brassicaceae	214-01
<i>Leptosiphon parviflorus</i> Benth	Yellow Linanthus	AH	.		Polemoniaceae	Hardham 4381 UCSB
<i>Leptosyne bigelovii</i> (A.Gray) A.Gray	Bigelow Coreopsis	AH	.		Asteraceae	Hardham 5781 SBBG
<i>Lobelia dunnii</i> var. <i>serrata</i> (Gray) McVaugh	Dunn Lobelia	PH	(OBL)		Lobeliaceae	Varnava et al. 33 RSA
* <i>Lolium multiflorum</i> Lam. *	Italian Ryegrass	AG	FAC		Poaceae	222-01
<i>Lonicera subspicata</i> var. <i>denudata</i> Rehder	Southern Honeysuckle	S	.		Caprifoliaceae	Dearing 4282 SBBG
<i>Lupinus bicolor</i> Lindley	Bicolored Lupine	AH	.		Fabaceae	Secrest sn 1-Jun-1955 RSA
<i>Lupinus luteolus</i> Kellogg	Butter Lupine	AH	.		Fabaceae	Fredell 133 SFV
<i>Lupinus microcarpus</i> Sims var. <i>microcarpus</i>	Red-flowered Lupine	AH	.		Fabaceae	Swanson sn 19-May-1978 UCSB
<i>Madia elegans</i> D. Don ssp. <i>elegans</i>	Common Tarplant	AH	.		Asteraceae	Magney observation
<i>Madia exigua</i> (Smith) A. Gray	Small or Threadstem Tarplant	AH	.		Asteraceae	Burgess & Williams 10514 SBBG
<i>Madia gracilis</i> (Smith) Keck	Slender Tarplant or Madia	AH	.		Asteraceae	Varnava & Fraga 612 RSA
* <i>Marrubium vulgare</i> L. *	White Horehound	S	FACU		Lamiaceae	Magney observation
<i>Matricaria discoidea</i> DC.	Pineapple Weed	AH	FACU		Asteraceae	226-01
<i>Melica imperfecta</i> Trin.	Coast Melic Grass	PG	.		Poaceae	Varnava & Columbus 278 RSA
* <i>Melilotus albus</i> Medikus *	White Sweetclover	A/BH	(FACU)		Fabaceae	Varnava & Fraga 592 RSA
* <i>Melilotus indicus</i> (L.) All. *	Sourclover, Yellow Sweetclover	AH	FACU		Fabaceae	Magney observation
<i>Mentzelia dispersa</i> S. Watson	Scattered Stickleaf	AH	.		Loasaceae	243-01
<i>Mentzelia laevicaulis</i> (Hooker) Torrey & Gray	Blazing Star	AH	.		Loasaceae	Mastright et al. 56 CDA
<i>Mentzelia micrantha</i> (Hook. & Arnott) T. & G.	Tiny-flowered Stickleaf	AH	.		Loasaceae	Varnava & Columbus 269 RSA
<i>Mimethanthe pilosa</i> (Benth.) Greene	Pilose or Downy Monkeyflower	AH	.		Phrymaceae	205-19
<i>Monardella breweri</i> var. <i>lanceolata</i> (Gray) A.C. Sanders & Elvin	Mustang Mint	AH	.		Lamiaceae	Holt sn 29-Jun-1937 SBBG
<i>Muhlenbergia rigens</i> (Benth.) Hitchc.	Deer Grass	PG	FAC		Poaceae	Varnava & Columbus 288 RSA
<i>Myriopteris</i> [<i>Cheilanthes</i>] <i>covillei</i> (Maxon) A. Löve & D. Löve	Coville Lip-fern	PF	.		Pteridaceae	Burgess 2161 SBBG
<i>Navarretia intertexta</i> (Benth.) Hook.	Needleleaf Navarretia	AH	FACW		Polemoniaceae	Searcy 28 UCSC
<i>Nemacladus capilaris</i> Greene	Common Nemacladus	AH	.		Lobeliaceae	Hardham 6120 RSA
<i>Nemacladus gracilis</i> Eastw.	Slender Nemacladus	AH	.		Lobeliaceae	Burgess & P. Munro 6901 SBBG
<i>Nemophila pedunculata</i> Benth.	Little-foot Baby Blue-eyes	AH	FAC		Hydrophyllaceae	Burgess & Williams 10510 SBBG
<i>Nicotiana attenuata</i> Torrey	Coyote Tobacco	AH	FACU		Solanaceae	Dearing 4284 SBBG
<i>Oenothera elata</i> ssp. <i>hirsutissima</i> (Gray) W. Dietr.	Great Marsh Evening-primrose	BH	FACW		Onagraceae	188-05
* <i>Oloptum miliaceum</i> (L.) Roser & Hamasha *	Smilo Grass	PG	(FACU)		Poaceae	Magney observation
<i>Pediomelum californicum</i> (S. Watson) Rydb.	California Indian Breadroot	PH	.		Fabaceae	Hardham 4379 RSA
<i>Pellaea mucronata</i> (D.C. Eaton) D.C. Eaton in Emory var. <i>mucronata</i>	Birdsfoot Cliffbrake or Fern	PF	.		Pteridaceae	Magney observation
<i>Penstemon heterophyllus</i> var. <i>australis</i> Munz & I.M. Johnston	Southern Mountain Penstemon	PH	.		Plantaginaceae	Varnava & Columbus 289 RSA
<i>Penstemon heterophyllus</i> Lindley var. <i>heterophyllus</i>	Mountain Penstemon	PH	.		Plantaginaceae	Hardham 5779 JEPS
<i>Persicaria amphibia</i> (L.) Delarbre	Kelp, Water-Smartweed	PH	OBL		Polygonaceae	Burgess & Munro 11046 SBBG
<i>Phacelia brachyloba</i> (Benth.) Gray	Short-lobed Phacelia	AH	.		Hydrophyllaceae	201-19

This checklist may be reproduced for educational or scientific purposes only, with full credit given to the author.

David L. Magney, P.O. Box 1539, Cedar Ridge, CA 95924. www.magney.org

Vacular Plants of Rose Valley, Ventura County, California

By David L. Magney

Scientific Name	Common Name	Habit	Wetland Indicator		Voucher
			Status	Family	
<i>Phacelia cicutaria</i> var. <i>hispida</i> (A. Gray) J.T. Howell	Hispid Caterpillar Phacelia	AH	.	Hydrophyllaceae	Hardham 5776 RSA
<i>Phacelia distans</i> Benth.	Wild Heliotrope	AH	.	Hydrophyllaceae	Hardham 5776 RSA
<i>Phacelia grisea</i> Gray	White-flowered Phacelia	AH	.	Hydrophyllaceae	Magney observation
<i>Phacelia longipes</i> Gray	Long-stalked Phacelia	AH	.	Hydrophyllaceae	Hardham 5783 SBBG
<i>Phacelia tanacetifolia</i> Benth.	Tansy Phacelia	AH	.	Hydrophyllaceae	Varnava 270 RSA
<i>Phoradendron bolleanum</i> (Seem.) Eichler	Fir Mistletoe	PH	.	Viscaceae	Pollard sn 7-Mar-1947 CAS
* <i>Pinus halepensis</i> Miller *	Allepo Pine	T	.	Pinaceae	Magney observation
<i>Plagiobothrys canescens</i> Benth. var. <i>canescens</i>	Valley or Bracted Popcornflower	AH	.	Boraginaceae	Burgess 8820 SBBG
* <i>Plantago lanceolata</i> L. *	Narrowleaf or English Plantain	PH	FAC-	Plantaginaceae	Magney observation
* <i>Polypogon maritimus</i> Willd. var. <i>maritimus</i> *	Mediterranean Beardgrass	AG	OBL	Poaceae	Varnava & Columbus 306 RSA
* <i>Polypogon monspeliensis</i> (L.) Desf. *	Rabbistsfoot Beardgrass	AG	FACW	Poaceae	Magney observation
<i>Prunus emarginata</i> (Hooker) Walp.	Bitter Cherry	S	FACU	Rosaceae	Magney observation
<i>Pterostegia drymarioides</i> Fischer & C. Meyer	Fairy Mist	AH	.	Polygonaceae	238-01
<i>Quercus berberidifolia</i> Leibm.	California Scrub Oak	S	.	Fagaceae	241-01
<i>Quercus wislizenii</i> ssp. <i>frutescens</i> (Engelm.) E. Murray	Shrubby Interior Live Oak	S	.	Fagaceae	Van Rensselaer sn 1-Jul-1937 DAV
<i>Quercus wislizenii</i> A. de Candolle ssp. <i>wislizenii</i>	Interior Live Oak	T	.	Fagaceae	Holt 436 SBBG
<i>Rhus trilobata</i> var. <i>quinata</i> Jepson	Skunkbrush	S	FACU	Anacardiaceae	230-01
<i>Ribes californicum</i> Hook. & Arn. var. <i>californicum</i>	California Gooseberry	S	.	Grossulariaceae	Van Rensselaer sn 15-May-1938 SBBG
<i>Rigiopappus leptocladus</i> Gray	Rigiopappus	AH	.	Asteraceae	Hardham 5399 SBBG
<i>Rosa californica</i> Cham. & Schltld.	California Wild Rose	S	FAC	Rosaceae	Varnava et al. 34 RSA
* <i>Rumex crispus</i> L. *	Curly Dock	PH	FAC	Polygonaceae	Magney observation
<i>Rumex salicifolius</i> J.A. Weinm. [var. <i>salicifolius</i>]	Willow Dock	PH	FACW	Polygonaceae	Burgess 2109 SBBG
<i>Ruppia cirrhosa</i> (Petagna) Grande	Spiral Wigeon-grass	PH	OBL	Potamogetonaceae	225-01
<i>Sabulina pusilla</i> (S. Watson) Dellenb.& Kabereit	Sandwort	AH	.	Caryophyllaceae	Hardham sn Apr-1960 UCSB
<i>Salix exigua</i> var. <i>hindsiana</i> (Bentham) Dorn	Hind's Willow	S	FACW	Salicaceae	207A-19
<i>Salix laevigata</i> Bebb.	Red Willow	T	FACW	Salicaceae	Magney observation
<i>Salix lasiolepis</i> Benth. var. <i>lasiolepis</i>	Arroyo Willow	T	FACW	Salicaceae	Smith 5770 SBBG
<i>Salvia columbariae</i> Benth.	Chia	AH	.	Lamiaceae	Sowder 325 UC
<i>Sambucus nigra</i> ssp. <i>caerulea</i> (Raf.) Bolli	Blue Elderberry	S	FAC	Adoxaceae	Varnava & Fraga 604 RSA
<i>Scutellaria siphocampylodes</i> Vatke	Skullcap	PH	FACU	Lamiaceae	Burgess & Munro 10273 CAS
<i>Senecio flaccidus</i> var. <i>douglasii</i> (DC.) B.L.Turner & T.M.Barkley	Shrubby Butterweed	S	.	Asteraceae	Varnava & Fraga 587 RSA
<i>Silene lemmonii</i> S. Watson	Lemmon Campion or Catchfly	PH	.	Caryophyllaceae	Hardham 6122 CAS
<i>Solidago velutina</i> ssp. <i>californica</i> (Nutt.) Semple	California Goldenrod	PH	.	Asteraceae	Varnava & Fraga 615 RSA
* <i>Spartium junceum</i> L. *	Spanish Broom	S	.	Fabaceae	Magney observation
<i>Stachys albens</i> A. Gray	Whitestem Hedge Nettle	PH	OBL	Lamiaceae	Dearing 1584 SBBG
<i>Stachys rigida</i> Bentham var. <i>rigida</i>	Rigid Hedge Nettle	PH	FACW	Lamiaceae	Varnava et al. 28 RSA
<i>Stephanomeria pauciflora</i> (Nutt.) Nelson var. <i>pauciflora</i>	Wire-lettuce	PH	.	Asteraceae	Varnava & Fraga 572.5 RSA
<i>Stipa cernua</i> Stebbins & Löve	Foothill Needlegrass	PG	.	Poaceae	Varnava & Columbus 287 RSA
<i>Stipa pulchra</i> A. Hitchc.	Purple Needlegrass	PG	.	Poaceae	Magney observation
<i>Symphotrichum chilense</i> (Nees) G.L. Nesom	Common California Aster	AH	FAC	Asteraceae	Magney observation
<i>Toxicoscordion</i> [<i>Zigadenus</i>] <i>fremontii</i> (Torrey) Rydberg	Star Lily	PH	.	Melanthiaceae	Secrest sn 1-Jun-1955 SBBG
<i>Trichostema lanatum</i> Bentham	Woolly Bluecurls, Romero	S	.	Lamiaceae	Magney observation
<i>Trichostema lanceolatum</i> Benth.	Vinegar Weed	AH	FACU	Lamiaceae	Magney observation

This checklist may be reproduced for educational or scientific purposes only, with full credit given to the author.

David L. Magney, P.O. Box 1539, Cedar Ridge, CA 95924. www.magney.org

Vacular Plants of Rose Valley, Ventura County, California

By David L. Magney

Scientific Name	Common Name	Habit	Wetland Indicator		Voucher
			Status	Family	
<i>Trifolium microcephalum</i> Pursh	Tiny-head Clover	AH	FACU	Fabaceae	Varnava & Columbus 293 RSA
<i>Trifolium variegatum</i> var. <i>geminiflorum</i> (Greene) Vincent	Small-flowered Variegated Clover	AH	FAC	Fabaceae	Burgess & Guillems 10512 SBBG
<i>Turricula parryi</i> (A. Gray) J.F. Macbr.	Poodle-dog Bush	S	.	Namaceae	Varnava et al. 31 RSA
<i>Typha domingensis</i> Pers.	Southern Cattail	PH	OBL	Typhaceae	Magney observation
<i>Verbena lasiostachys</i> Link. var. <i>lasiostachys</i>	Western Verbena	AH	FAC	Verbenaceae	Magney observation
<i>Verbena lasiostachys</i> var. <i>scabrida</i> Mold.	Rough Western Verbena	AH	OBL	Verbenaceae	Varnava & Fraga 595 RSA
* <i>Veronica anagallis-aquatica</i> L. *	Water Speedwell	PH	OBL	Plantaginaceae	214-01
<i>Viola purpurea</i> Kellogg ssp. <i>purpurea</i>	Purple or Mountain Violet	PH	.	Violaceae	Burgess et al. 9296 SBBG
* <i>Vulpia bromoides</i> (L.) S.F. Gray *	Slender Fescue	AG	FAC	Poaceae	220-01
* <i>Vulpia myuros</i> (L.) C. Gnelin forma <i>myuros</i> *	Rattail Fescue	AG	FACU	Poaceae	207B-19
<i>Xanthium strumarium</i> L.	Cocklebur	AH	FAC	Asteraceae	Burgess 4989 SBBG

Notes: Scientific nomenclature follows the Flora of North America Editorial Committee (1993-), *The Jepson Manual* (Baldwin et al. 2012), Baker et al. (2012 for Phrymaceae), Nesom (2012a & 2012b for *Erythranthe*, 2013 for *Diplacus*), Tulig & Nesom (2012 for *Diplacus*), Hasenstab-Lehman & Simpson (2012 for *Cryptantha*), Burge & Zhukovsky (2013 for *Ceanothus vestitus* complex), Schneider (2016 for *Aphyllon*), Colwell et al. (2017 for *Aphyllon*), and Broich (1987 for *Lathyrus vestitus*). Most current taxomomy is followed when changed have occurred since publication of the above listed references. Common names follow Abrams and Ferris (1960), Neihaus and Ripper (1976), and DeGarmo (1980). An "*" indicates non-native taxa that have become naturalized or persist without cultivation.

Habit definitions:

AF = annual fern or fern ally.	PG = perennial grass or graminoid.
AG = annual grass or graminoid.	PH = perennial herb.
AH = annual herb.	PV = perennial vine.
BH = biennial herb.	S = shrub.
PF = perennial fern or fern ally.	T = tree.

Wetland indicator status (Lichvar et al. 2016): OBL = obligate wetland species, occurs almost always in wetlands (>99% probability)

FACW = facultative wetland species, usually found in wetlands (67-99% probability).

FAC = facultative species, equally likely to occur in wetlands or nonwetlands (34-67% probability).

FACU = facultative upland species, usually occur in nonwetlands (67-99% probability).

A period "." indicates that no wetland indicator status has been given in Lichvar et al. (2016).

Parentheses around an indicator status indicates the wetland status as suggested by David L. Magney.

Developed by David L. Magney 2021, updated 2023. Checklist may be used for educational and nonprofit purposes only.

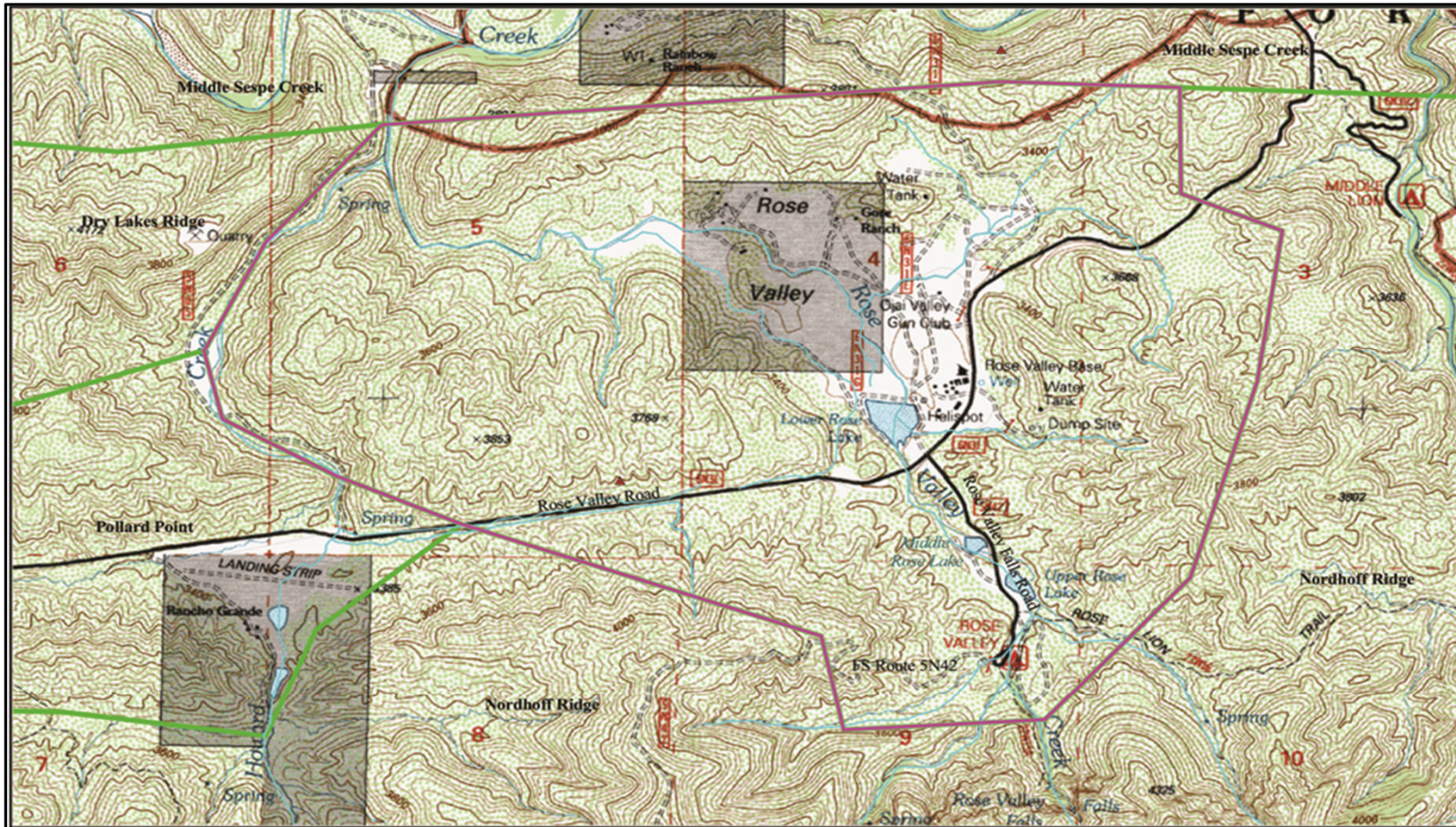
Based on voucher specimens at one or more California public herbaria and direct observations by author on 5 February 1984, 13 March 1988, 28 May 2001, 11 November 2008, 3 June 2019, and 25 June 2021.

Vascular Plants of Rose Valley, Ventura County, California

By David L. Magney

Scientific Name	Common Name	Habit	Wetland Indicator	Status	Family	Voucher
-----------------	-------------	-------	-------------------	--------	--------	---------

Topographic map for Rose Valley Bioregion, created as part of the Ventura County Flora project and described in www.venturaflora.com.
 The Rose Valley Bioregion is also described in the Botanical Resources of the Utom (Santa Clara) River Watershed, published by CNPS in 2023.



Rose Valley Floristic Bioregion

 Rose Valley Floristic Bioregion

 Ventura County Bioregions

 Streams

Map created 3 March 2023
 David Magney Environmental Consulting
 P.O. Box 1539, Cedar Ridge, CA 95924
 530/273-1799 - www.magney.org
 Projection: NAD 1983, CA State Plane, Zone V (feet)
 Base Map: Lion Canyon, Calif. USGS 7.5-minute Quadrangle

