

Vascular Plants of Pollard Point, Ventura County, California
By David L. Magney

Scientific Name	Common Name	Wetland Indicator			Abundance Status
		Habit	Status	Family	
<i>Acer macrophyllum</i> Pursh var. <i>macrophyllum</i>	Bigleaf Maple	T	FAC	Sapindaceae	O
<i>Acmispon micranthus</i> (Torrey & A. Gray) Brouillet	Grab Hosackia or Lotus	AH	.	Fabaceae	R
<i>Acourtia microcephala</i> DC.	Sacapellote	PH	.	Asteraceae	C
* <i>Acroptilon repens</i> (L.) DC. *	Russian Knapweed	AH	.	Asteraceae	S
<i>Adenostoma fasciculatum</i> Hook. & Arn. var. <i>fasciculatum</i>	Chamise	S	.	Rosaceae	C
<i>Ambrosia acanthicarpa</i> Hooker	Burweed, Annual Bur-sage	AH	.	Asteraceae	C
<i>Arctostaphylos glandulosa</i> ssp. <i>cushingiana</i> (Eastw.) Keeley, Vasey & Parker	Cushing's Eastwood Manzanita	S	.	Ericaceae	S
<i>Arctostaphylos glandulosa</i> Eastw. ssp. <i>glandulosa</i>	Eastwood Manzanita	S	.	Ericaceae	C
<i>Arctostaphylos glandulosa</i> ssp. <i>mollis</i> (J.E. Jones) P. Wells	Santa Ynez Mountains Manzanita	S	.	Ericaceae	C
<i>Arctostaphylos glauca</i> Lindley	Bigberry Manzanita	S	.	Ericaceae	C
<i>Artemisia douglasiana</i> Besser	Mugwort	PH	FAC	Asteraceae	C
<i>Artemisia tridentata</i> Nuttall ssp. <i>tridentata</i>	Great Basin Sagebrush	S	.	Asteraceae	C
<i>Asclepias eriocarpa</i> Benth	Kotolo, Indian Milkweed	PH	.	Apocynaceae	C
* <i>Avena barbata</i> Link. *	Slender Wild Oat	AG	.	Poaceae	C
* <i>Avena fatua</i> L. *	Wild Oat	AG	.	Poaceae	C
<i>Baccharis pilularis</i> ssp. <i>consanguinea</i> (DC.) C.G. Wolf	Coyote Brush	S	(FACU)	Asteraceae	C
<i>Baccharis salicifolia</i> (Ruiz Lopez & Pavon) Pers. ssp. <i>salicifolia</i>	Mulefat, Seep-willow, Water-wally	S	FAC	Asteraceae	C
<i>Barbarea orthoceras</i> Ledeb.	American Wintercress	BH	FACW	Brassicaceae	O
<i>Boechea arcuata</i> (Nutt.) Windham & Al-Shehbaz	Few-flowered Rock Cress	PH	.	Brassicaceae	C
<i>Brickellia californica</i> (T. & G.) Gray	California Brickellbush	S	FACU	Asteraceae	C
<i>Brickellia nevini</i> Gray	Nevin Brickellbush	S	.	Asteraceae	C
<i>Brodiaea jolonensis</i> Eastwood	Dwarf Brodiaea	PG	.	Themidaceae	U
* <i>Bromus diandrus</i> Roth. ssp. <i>diandrus</i> *	Ripgut Grass	AG	(FACU)	Poaceae	C
* <i>Bromus hordeaceus</i> L. ssp. <i>hordeaceus</i> *	Soft Chess	AG	FACU	Poaceae	C
* <i>Bromus rubens</i> L. *	Red Brome	AG	UPL	Poaceae	C
* <i>Bromus tectorum</i> L. *	Downy Brome, Cheat Grass	AG	.	Poaceae	C
<i>Calochortus venustus</i> Benth.	Butterfly Mariposa Lily	PG	.	Liliaceae	C
<i>Calyptridium</i> sp. nova	new Pussypaws	AH	.	Montiaceae	R
<i>Calystegia malacophylla</i> ssp. <i>pedicellata</i> (Jepson) Munz	Sierra Morning-glory	PV	.	Convolvulaceae	C
<i>Castilleja subinclusa</i> ssp. <i>franciscana</i> (Pennell) Chuang & Heckard	San Francisco Long-leaved Indian Paintbrush	PH	.	Orobanchaceae	U
<i>Castilleja subinclusa</i> E. Greene ssp. <i>subinclusa</i>	Long-leaved or Jepson Indian Paintbrush	PH	.	Orobanchaceae	C
<i>Caulanthus coulteri</i> S. Watson var. <i>coulteri</i>	Coulter Jewelflower	AH	.	Brassicaceae	C
<i>Caulanthus lasiophyllus</i> (Hooker & Arnott) Payson	California Mustard	AH	.	Brassicaceae	C
<i>Ceanothus crassifolius</i> var. <i>planus</i> Abrams	Flatleaf Snowball	S	.	Rhamnaceae	C
<i>Ceanothus leucodermis</i> E. Greene	Chaparral Whitethorn	S	.	Rhamnaceae	C
<i>Ceanothus oliganthus</i> Nuttall var. <i>oliganthus</i>	Hoary Ceanothus	S	.	Rhamnaceae	C
* <i>Centaurea benedicta</i> (L.) L. * [<i>Cnicus benedictus</i> L.]	Blessed Thistle	AH	.	Asteraceae	S
* <i>Centaurea melitensis</i> L. *	Tocalote, Napa Thistle	AH	.	Asteraceae	C
* <i>Centaurea solstitialis</i> L. *	Yellow Star-thistle	AH	.	Asteraceae	C
<i>Cercocarpus betuloides</i> Torrey & A. Gray var. <i>betuloides</i>	Birchleaf Mountain Mahogany	S	.	Rosaceae	C
<i>Chaenactis glabriuscula</i> DC. var. <i>glabriuscula</i>	Common Yellow Pincushion	AH	.	Asteraceae	C
* <i>Chenopodium album</i> L. *	Lamb's Quarters, Pigweed, White Goosefoot	AH	FACU	Chenopodiaceae	C
<i>Chlorogalum pomeridianum</i> (DC.) Kunth var. <i>pomeridianum</i>	Soap Lily	PG	.	Agavaceae	C
<i>Cirsium occidentale</i> var. <i>venustum</i> (E. Greene) Jepson	Red or Venus Thistle	BH	.	Asteraceae	O
<i>Clarkia purpurea</i> ssp. <i>quadrivulnera</i> (Douglas) H. Lewis & M. Lewis	Four-spotted Purple Clarkia	AH	.	Onagraceae	C

This checklist may be reproduced for educational or scientific purposes only, with full credit given to the author.

Vascular Plants of Pollard Point, Ventura County, California
By David L. Magney

Scientific Name	Common Name	Wetland Indicator			Abundance Status
		Habit	Status	Family	
<i>Claytonia parviflora</i> ssp. <i>viridis</i> (Davidson) J.M. Miller & Chambers	Small-flowered Miner's Lettuce	AH	FACU	Montiaceae	U
<i>Claytonia perfoliata</i> ssp. <i>mexicana</i> (Rydb.) J.M. Miller & Chambers	Miner's Lettuce	AH	FAC	Montiaceae	S
<i>Clematis lasiantha</i> Nuttall	Pipestem Clematis	PV	.	Ranunculaceae	C
<i>Clematis lasiantha</i> Nuttall	Pipestem Clematis	PV	.	Ranunculaceae	C
<i>Cordylanthus rigidus</i> (Benth.) Jepson ssp. <i>rigidus</i>	Rigid Bird's Beak	AH	.	Orobanchaceae	C
<i>Corethrogyne filaginifolia</i> (Hook. & Arn.) Nutt. var. <i>filaginifolia</i>	California Cudweed-aster	PH	.	Asteraceae	C
<i>Cornus glabrata</i> Benth	Brown Dogwood	S	FACW	Cornaceae	U
<i>Cryptantha muricata</i> (Hooker & Arnott) Nelson & Macbr. var. <i>muricata</i>	Showy Prickly Forget-Me-Not	AH	.	Boraginaceae	O
<i>Cuscuta subinclusa</i> Durand & Hilg.	Canyon Dodder	AV	.	Convolvulaceae	O
<i>Datisca glomerata</i> (C. Presl) Baillon	Durango Root	PH	FACW	Datisceae	C
<i>Delphinium cardinale</i> Hooker	Scarlet or Cardinal Larkspur	PH	.	Ranunculaceae	C
<i>Dendromecon rigida</i> Benth	Bush Poppy	S	.	Papaveraceae	C
<i>Diplacus longiflorus</i> (Nuttall) A. Grant var. <i>longiflorus</i>	Sticky Bush Monkeyflower	S	FACU	Phrymaceae	C
<i>Dipterostemon capitatus</i> (Benth) Rydb. ssp. <i>capitatus</i>	Blue Dicks	PG	FACU	Themidaceae	C
<i>Dryopteris arguta</i> (Kaulfuss) Maxon	Coastal or Marginal Wood Fern, Yerba del Golpe	PF	.	Dryopteridaceae	C
<i>Ehrendorferia chrysantha</i> (Hooker & Arnott) Rylander	Golden Eardrops	PH	.	Fumariaceae	C
<i>Elymus triticoides</i> Buckl. ssp. <i>triticoides</i>	Creeping Wildrye	PG	FAC	Poaceae	C
<i>Eriastrum densifolium</i> ssp. <i>austromontanum</i> (Craig) H. Mason	Mountain Woolly Star	PH	.	Polemoniaceae	O
<i>Eriodictyon crassifolium</i> Benth	Thickleaf Yerba Santa	S	.	Namaceae	C
<i>Eriodictyon crassifolium</i> var. <i>nigrescens</i> Brand	Thickleaf Yerba Santa	S	.	Namaceae	C
<i>Eriogonum cithariforme</i> var. <i>agninum</i> (E. Greene) Reveal	Santa Ynez Wild Buckwheat	AH	.	Polygonaceae	S
<i>Eriogonum cithariforme</i> S. Watson var. <i>cithariforme</i>	Cithara Buckwheat	AH	.	Polygonaceae	C
<i>Eriogonum fasciculatum</i> var. <i>polifolium</i> (A. DC.) Torrey & A. Gray	Hoary California Buckwheat	S	.	Polygonaceae	C
<i>Eriogonum gracile</i> Benth	Slender Woolly Buckwheat	AH	.	Polygonaceae	O
<i>Erythranthe cardinalis</i> (Douglas ex Benth.) Spach	Scarlet Monkeyflower	PH	FACW	Phrymaceae	C
<i>Eschscholzia caespitosa</i> Benth	Tufted Poppy	BH	.	Papaveraceae	O
<i>Fraxinus dipetala</i> Hooker & Arnott	California Flowering Ash	T	.	Oleaceae	C
<i>Galium andrewsii</i> A. Gray ssp. <i>andrewsii</i>	Pine Mat, Phlox-leaved Bedstraw	PH	.	Rubiaceae	C
<i>Garrya flavescens</i> S. Watson ssp. <i>flavescens</i>	Silk-tassel Bush	S	.	Garryaceae	O
<i>Garrya veatchii</i> Kellogg	Veatch's Silk-tassel Bush	S	.	Garryaceae	C
<i>Hesperoyucca whipplei</i> Torrey ssp. <i>whipplei</i>	Our Lord's Candle	S	.	Agavaceae	C
<i>Heteromeles arbutifolia</i> (Lindley) Roemer	Toyon, Christmas Holly, Hollywood	S	.	Rosaceae	C
* <i>Hirschfeldia incana</i> (L.) Lagr.-Fossat *	Summer Mustard	PH	(FACU)	Brassicaceae	C
<i>Keckiella ternata</i> var. <i>septentrionalis</i> (Munz & Johnston) N. Holmgren	Blue-stemmed Bush Penstemon	S	.	Plantaginaceae	C
* <i>Lactuca serriola</i> L. *	Prickly Wild Lettuce	AH	FACU	Asteraceae	C
* <i>Lepidium appelianum</i> Al-Shehbaz [<i>Cardaria pubescens</i>] *	White-top	PH	UPL	Brassicaceae	S
* <i>Lepidium draba</i> L. *	Heart-podded Hoary Cress	PH	(FACU)	Brassicaceae	O
<i>Lupinus albifrons</i> Benth. var. <i>albifrons</i>	Silver Bush Lupine	S	.	Fabaceae	C
<i>Lupinus bicolor</i> Lindley	Bicolored or Miniature Lupine	AH	.	Fabaceae	C
<i>Lupinus sparsiflorus</i> Benth. ssp. <i>sparsiflorus</i>	Few-flowered or Loose-flowered Lupine	AH	.	Fabaceae	C
<i>Lupinus succulentus</i> Douglas	Fleshy Lupine	AH	.	Fabaceae	C
<i>Mentzelia dispersa</i> S. Watson	Scattered Stickleaf	AH	.	Loasaceae	O
<i>Mentzelia laevicaulis</i> (Hooker) Torrey & Gray	Blazing Star	AH	.	Loasaceae	O
<i>Mentzelia micrantha</i> (Hook. & Arnott) T. & G.	Tiny-flowered Stickleaf	AH	.	Loasaceae	C
<i>Myriopteris</i> [<i>Cheilanthes</i>] <i>covillei</i> (Maxon) A. Löve & D. Löve	Coville Lip-fern	PF	.	Pteridaceae	C

This checklist may be reproduced for educational or scientific purposes only, with full credit given to the author.

Vascular Plants of Pollard Point, Ventura County, California

By David L. Magney

Scientific Name	Common Name	Wetland Indicator			Abundance Status
		Habit	Status	Family	
<i>Navarretia hamata</i> E. Greene ssp. <i>hamata</i>	Skunk Navarretia	AH	.	Polemoniaceae	S
<i>Notholithocarpus densiflorus</i> (Hook. & Arn.) Manos, C.H. Cannon, & S. Oh var. <i>densiflorus</i>	Tanbark Oak	S/T	.	Fagaceae	U
<i>Penstemon heterophyllus</i> Lindley var. <i>heterophyllus</i>	Mountain Penstemon	PH	.	Plantaginaceae	C
<i>Phacelia brachyloba</i> (Benth.) Gray	Short-lobed Phacelia	AH	.	Hydrophyllaceae	C
<i>Phacelia longipes</i> Gray	Long-stalked Phacelia	AH	.	Hydrophyllaceae	C
<i>Phacelia parryi</i> Torrey	Parry Phacelia	AH	.	Hydrophyllaceae	O
<i>Phacelia tanacetifolia</i> Benth.	Tansy Phacelia	AH	.	Hydrophyllaceae	C
<i>Phoradendron leucarpum</i> ssp. <i>macrophyllum</i> (Engelm.) J.R. Abbott & R.L. Thomps.	Bigleaf Mistletoe	PH	.	Viscaceae	C
<i>Phoradendron leucarpum</i> ssp. <i>tomentosum</i> (DC.) J.R. Abbott & R.L. Thomps.	Oak or Hairy Mistletoe	PH	.	Viscaceae	C
<i>Prunus ilicifolia</i> (Nutt.) Walp. ssp. <i>ilicifolia</i>	Hollyleaf Cherry	S	.	Rosaceae	C
<i>Pseudognaphalium californicum</i> (DC.) Anderberg	Green Everlasting	A/BH	.	Asteraceae	C
<i>Pseudotsuga macrocarpa</i> (Vasey) Mayr	Bigcone Spruce or False Hemlock	T	.	Pinaceae	C
<i>Quercus wislizenii</i> ssp. <i>frutescens</i> (Engelm.) E. Murray	Shrubby Interior Live Oak	S	.	Fagaceae	S
<i>Ribes californicum</i> Hook. & Arn. var. <i>californicum</i>	California Gooseberry	S	.	Grossulariaceae	O
<i>Ribes californicum</i> var. <i>hesperium</i> (McClatchie) Jeps.	Southern Calif. Gooseberry	S	.	Grossulariaceae	O
<i>Ribes roezlii</i> Regel var. <i>roezlii</i>	Sierra Gooseberry	S	.	Grossulariaceae	S
<i>Romneya trichocalyx</i> Eastwood	Hairy Matilija Poppy	S	.	Papaveraceae	C
<i>Salix laevigata</i> Bebb.	Red Willow	T	FACW	Salicaceae	C
* <i>Sisymbrium altissimum</i> L. *	Tumble Mustard	AH	FACU	Brassicaceae	O
* <i>Spartium junceum</i> L. *	Spanish Broom	S	.	Fabaceae	O
<i>Stephanomeria virgata</i> Benth. ssp. <i>virgata</i>	Twiggy Wreath Plant, Tall Stephanomeria	AH	.	Asteraceae	C
<i>Symphoricarpos albus</i> var. <i>laevigatus</i> (Fern.) S.F. Blake	Common Snowberry	S	FACU	Caprifoliaceae	R
<i>Symphoricarpos mollis</i> Nuttall	Creeping or Trailing Snowberry	S	FACU	Caprifoliaceae	C
<i>Toxicodendron diversilobum</i> (T. & G.) Greene	Western Poison Oak	S/V	FACU	Anacardiaceae	C
* <i>Veronica anagallis-aquatica</i> L. *	Water or Common Speedwell	PH	OBL	Plantaginaceae	C
<i>Vulpia microstachys</i> var. <i>confusa</i> (Piper) Lonard & Gould	Fescue	AG	.	Poaceae	R

Notes: Scientific nomenclature follows the Flora of North America Editorial Committee (1993-2018), *The Jepson Manual* (Baldwin et al. 2012), Baker et al. (2012 for Phrymaceae),

Nesom (2012a & 2012b for *Erythranthe*, 2013 for *Diplacus*), Tulig & Nesom (2012 for *Diplacus*), Hasenstab-Lehman & Simpson (2012 for *Cryptantha*),

Burge & Zhukovsky (2013 for *Ceanothus vestitus* complex), Schneider (2016 for *Aphyllon*), Colwell et al. (2017 for *Aphyllon*), and Broich (1987 for *Lathyrus vestitus*).

Most current taxomomy is followed when changed have occurred since publication of the above listed references.

Common names follow Abrams and Ferris (1960), Neihaus and Ripper (1976), and DeGarmo (1980).

An "*" indicates non-native taxa that have become naturalized or persist without cultivation.

Habit definitions:

AF = annual fern or fern ally.

AG = annual grass or graminoid.

AH = annual herb.

BH = biennial herb.

PF = perennial fern or fern ally.

PG = perennial grass or graminoid.

PH = perennial herb.

PV = perennial vine.

S = shrub.

T = tree.

Wetland indicator status (Lichvar et al. 2016): OBL = obligate wetland species, occurs almost always in wetlands (>99% probability)

FACW = facultative wetland species, usually found in wetlands (67-99% probability).

FAC = facultative species, equally likely to occur in wetlands or nonwetlands (34-67% probability).

FACU = facultative upland species, usually occur in nonwetlands (67-99% probability).

A period "." indicates that no wetland indicator status has been given in Lichvar et al. (2016).

Parentheses around an indicator status indicates the wetland status as suggested by David L. Magney.

This checklist may be reproduced for educational or scientific purposes only, with full credit given to the author.

Vascular Plants of Pollard Point, Ventura County, California

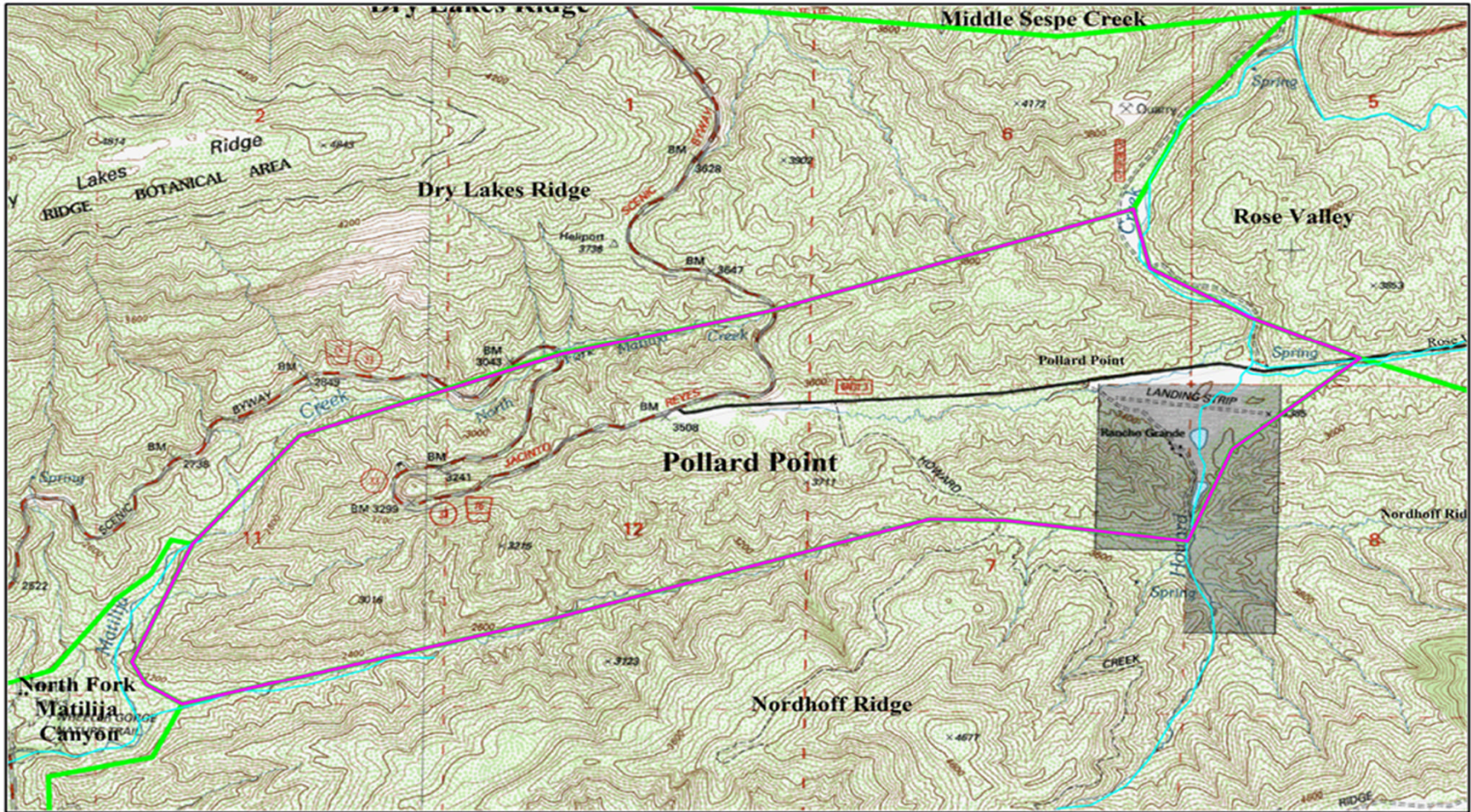
By David L. Magney

Scientific Name	Common Name	Wetland Indicator			Abundance Status	
		Habit	Status	Family		
Abundance status definitions for all of Ventura County: R = Rare (1-5 extant populations known) U = Uncommon (6-10 extant populations known) S = Scattered (11-20 extant populations known) O = Occasional (21-30 extant populations known) C = Common (>30 extant populations known) X = Expected but not yet found T = Type Locality		Formal listing status definitions: FE = Federally listed Endangered FT = Federally listed Threatened SE = California listed Endangered ST = California listed Threatened SR = California listed Rare FS = Forest Service Sensitive Species		CNPS Rarity Ranking definitions: 1A = CNPS 1A 1B.x = CNPS 1B 2.x = CNPS 2 3.x = CNPS 3 4.x = CNPS 4		
Developed by David L. Magney 2016, updated 2023. Checklist may be used for educational and nonprofit purposes only. Based on voucher specimens at one or more California public herbaria and direct observations by author.						


Vascular Plants of Pollard Point, Ventura County, California

By David L. Magney

Scientific Name	Common Name	Habit	Wetland Indicator	Status	Family	Abundance Status
-----------------	-------------	-------	-------------------	--------	--------	------------------



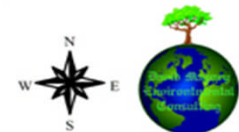
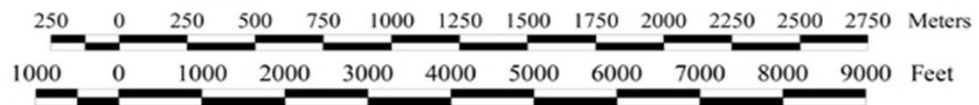
Pollard Point Floristic Bioregion

 Pollard Point Floristic Bioregion

 Ventura County Bioregions

 Streams

Map created 14 March 2023
 David Magney Environmental Consulting
 P.O. Box 1539, Cedar Ridge, CA 95924
 530/273-1799 - www.magney.org
 Projection: NAD 1983, CA State Plane, Zone V (feet)
 Base Map: Wheeler Springs, Calif. & Lion Canyon, Calif. USGS 7.5-minute Quadrangles



This checklist may be reproduced for educational or scientific purposes only, with full credit given to the author.

David L. Magney, P.O. Box 1539, Cedar Ridge, CA 95924. www.magney.org