

Vascular Plants of Montalvo Bioregion, Ventura County, California

By David L. Magney

Scientific Name	Common Name	Habit	Wetland Indicator		Abundance Status
			Status	Family	
* <i>Afrocarpus falcatus</i> (Thunb.) C.N. Page *	Outeniqua Yellowwood	T	.	Podocarpaceae	R
* <i>Agonis flexuosa</i> (Muhl. ex Willd.) Sweet	Peppermint Willow	T	?	Myrtaceae	R
<i>Amaranthus blitoides</i> S. Watson	Prostrate Amaranth	AH	FACU	Amaranthaceae	O
* <i>Amaranthus deflexus</i> L. *	Low Amaranth	AH	.	Amaranthaceae	U
<i>Amaranthus powellii</i> S. Watson ssp. <i>powellii</i>	Powell Amaranth	AH	.	Amaranthaceae	U
* <i>Avena fatua</i> L. *	Wild Oat	AG	.	Poaceae	C
* <i>Brachychiton populneus</i> (Schott. & Endl.) R. Br. ssp. <i>populneus</i> *	Kurrajong	T	-	Malvaceae	R
* <i>Cerastium fontanum</i> ssp. <i>vulgare</i> (Hartman) Greuter & Burdet *	Common Chickweed	AH	FACU	Caryophyllaceae	R
* <i>Cirsium arvense</i> (L.) Scop. *	Canada or Creeping Thistle	PH	FACU	Asteraceae	R
* <i>Cucurbita pepo</i> L. var. <i>pepo</i> *	Field Pumpkin	AV	.	Cucurbitaceae	R
* <i>Cynara cardunculus</i> L. ssp. <i>cardunculus</i> *	Cardoon, Thistle Artichoke	PH	.	Asteraceae	U
* <i>Cynodon dactylon</i> (L.) Pers. var. <i>dactylon</i> *	Bermuda Grass	PG	FACU	Poaceae	C
* <i>Digitaria sanguinalis</i> (L.) Scop. *	Hairy Crabgrass	PG	FACU	Poaceae	S
* <i>Erigeron karvinskianus</i> DC. *	Santa Barbara Daisy	PH	?	Asteraceae	R
* <i>Eucalyptus rudis</i> Endl. *	Western Australian Floodedgum	T	?	Myrtaceae	R
* <i>Euphorbia rigida</i> M. Bieb. *	Gopher Spurge	PH	.	Euphorbiaceae	R
* <i>Ficus rubiginosa</i> Desf ex Venten. var. <i>australis</i> or <i>pubescens</i> *	Rustyleaf Fig	T	(FACW)	Moraceae	R
* <i>Fuchsia hybrida</i> Voss. *	Hybrid Fuchsia	S	.	Onagraceae	R
* <i>Geranium incanum</i> Burm. f. *	Carpet Geranium	AH	.	Geraniaceae	R
* <i>Hirschfeldia incana</i> (L.) Lagr.-Fossat *	Summer Mustard	PH	(FACU)	Brassicaceae	C
* <i>Hordeum murinum</i> ssp. <i>glaucum</i> (Steudel) Tzvelev *	Summer Barley	AG	FACU	Poaceae	C
* <i>Ipomoea purpurea</i> (L.) Roth	Common Morning-glory	PV	?	Convolvulaceae	U
* <i>Kochia scoparia</i> (L.) Schrader *	Common Kochia	AH	.	Chenopodiaceae	S
* <i>Lactuca sativa</i> L. *	Lettuce	AH	(FAC)	Asteraceae	R
* <i>Lepidium draba</i> L. *	Heart-podded Hoary Cress	PH	(FACU)	Brassicaceae	O
* <i>Linaria dalmatica</i> (L.) Mill. ssp. <i>dalmatica</i> *	Dalmatian Toadflax	PH	.	Plantaginaceae	U
<i>Persicaria lapathifolia</i> (L.) Delarbre	Willow Weed	AH	FACW	Polygonaceae	C
<i>Phacelia viscida</i> (Bentham) Torrey var. <i>viscida</i>	Viscid Phacelia	AH	.	Hydrophyllaceae	C
<i>Phyla nodiflora</i> (L.) E. Greene var. <i>nodiflora</i>	Common Frog-fruit	PH	FACW	Verbenaceae	U
<i>Platanus racemosa</i> Nuttall var. <i>racemosa</i>	California or Western Sycamore	T	FACU	Platanaceae	C
* <i>Podocarpus macrophyllus</i> (Thunb.) C.N. Page *	Yew Plum Pine	T	.	Podocarpaceae	R
<i>Pseudognaphalium ramosissimum</i> (Nutt.) Anderberg	Pink Everlasting	BH	.	Asteraceae	S

Notes: Scientific nomenclature follows the Flora of North America Editorial Committee (1993-2018), *The Jepson Manual* (Baldwin et al. 2012).

Most current taxonomy is followed when changed have occurred since publication of the above listed references.

Common names follow Abrams and Ferris (1960), Neihaus and Ripper (1976), and DeGarmo (1980).

An "*" indicates non-native taxa that have become naturalized or persist without cultivation.

Habit definitions:

AF = annual fern or fern ally.

AG = annual grass or graminoid.

AH = annual herb.

BH = biennial herb.

PF = perennial fern or fern ally.

PG = perennial grass or graminoid.

PH = perennial herb.

PV = perennial vine.

S = shrub.

T = tree.

Wetland indicator status (Lichvar et al. 2016): OBL = obligate wetland species, occurs almost always in wetlands (>99% probability)

FACW = facultative wetland species, usually found in wetlands (67-99% probability).

FAC = facultative species, equally likely to occur in wetlands or nonwetlands (34-67% probability).

FACU = facultative upland species, usually occur in nonwetlands (67-99% probability).

A period "." indicates that no wetland indicator status has been given in Lichvar et al. (2016).

Parentheses around an indicator status indicates the wetland status as suggested by David L. Magney.

Abundance status definitions for Ventura County:

R = Rare (1-5 extant populations known)

U = Uncommon (6-10 extant populations known)

S = Scattered (11-20 extant populations known)

O = Occasional (21-30 extant populations known)

C = Common (>30 extant populations known)

X = Expected but not yet found

T = Type Locality

Listing status definitions:

FE = Federally listed Endangered

FT = Federally listed Threatened

SE = California listed Endangered

ST = California listed Threatened

SR = California listed Rare

FS = Forest Service Sensitive Species

CNPS Rarity Ranking definitions:

1A = CNPS 1A

1B.x = CNPS 1B

2.x = CNPS 2

3.x = CNPS 3

4.x = CNPS 4

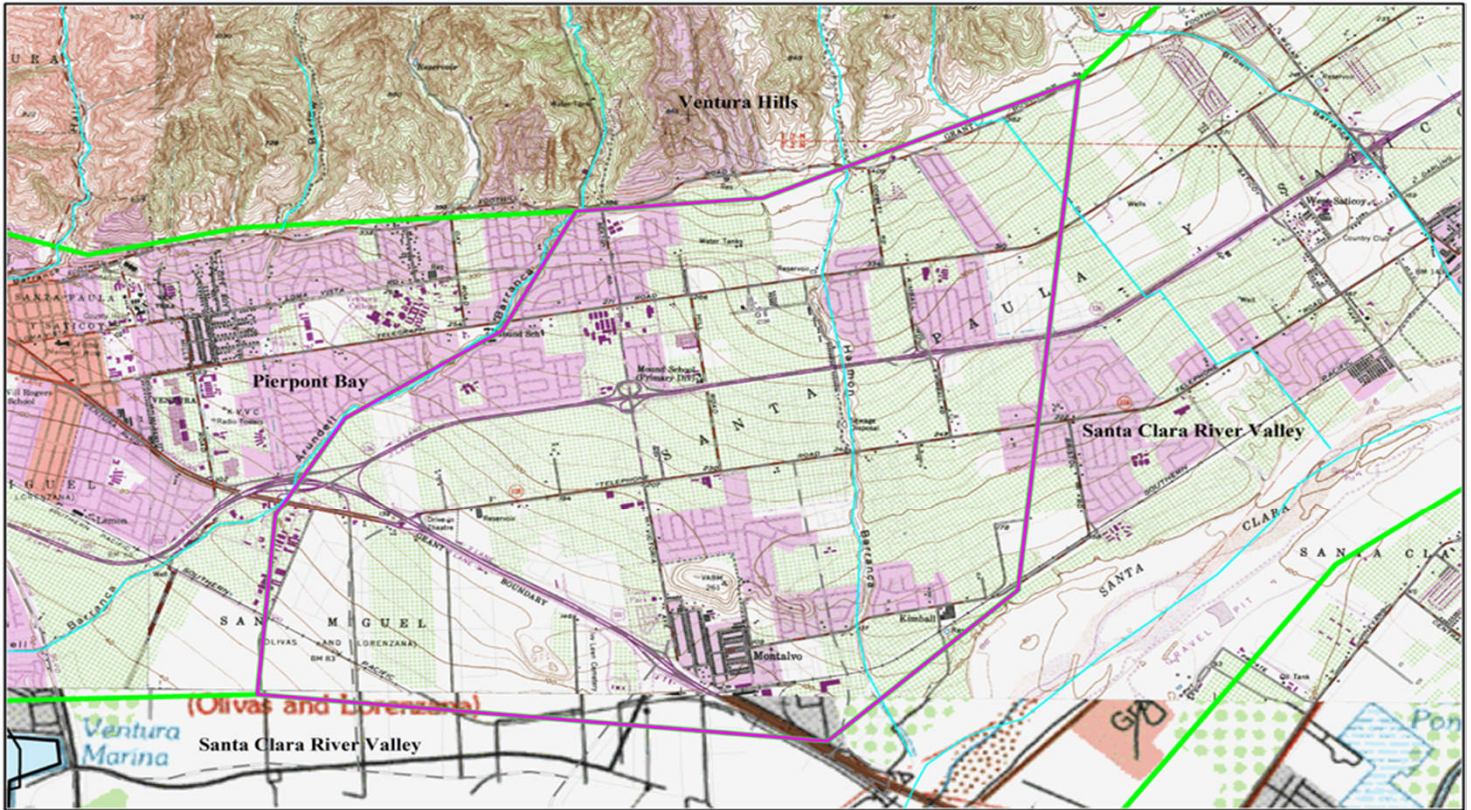
Developed by David L. Magney 2023. Checklist may be used for educational and nonprofit purposes only.

Based on voucher specimens at one or more California public herbaria and direct observations by author.


This checklist may be reproduced for educational or scientific purposes only, with full credit given to the author.

Vascular Plants of Montalvo Bioregion, Ventura County, California

By David L. Magney



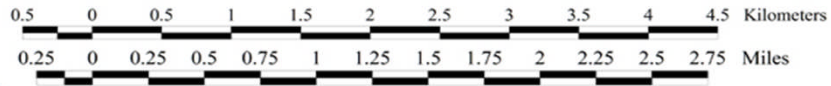
Montalvo Floristic Bioregion

 Montalvo Floristic Bioregion

 Ventura County Bioregions

 Streams

Map created 13 March 2023
 David Magney Environmental Consulting
 P.O. Box 1539, Cedar Ridge, CA 95924
 530/273-1799 - www.magney.org
 Projection: NAD 1983, CA State Plane, Zone V (feet)
 Base Map: Saticoy, Calif. & USGS 7.5-minute Quadrangle



This checklist may be reproduced for educational or scientific purposes only, with full credit given to the author.

David L. Magney, P.O. Box 1539, Cedar Ridge, CA 95924. www.magney.org