

Vascular Plants of the Ventura County Portion of the Cuyama Badlands Floristic Bioregion

By David L. Magney

Scientific Name	Common Name	Habit	Wetland Indicator		Abundance Status
			Status	Family	
<i>Abronia pogonantha</i> Heimerl	Desert Sand-verbena	AH	.	Nyctaginaceae	R
<i>Acamptopappus sphaerocephalus</i> (Har. & Gray) Gray var. <i>sphaerocephalus</i>	Rayless Goldenhead	S	.	Asteraceae	R
<i>Acanthomintha obovata</i> var. <i>cordata</i> Jokerst	Heartleaf Thornmint	AH	.	Lamiaceae	S, 4.2
<i>Acanthomintha obovata</i> Jeps. var. <i>obovata</i>	Heartleaf Thornmint	AH	.	Lamiaceae	S, 4.2
<i>Achillea millefolium</i> L. var. <i>millefolium</i>	White Yarrow	PH	FACU	Asteraceae	S
<i>Achillea millefolium</i> var. <i>occidentale</i> DC.	Woolly White Yarrow	PH	FACU	Asteraceae	U
<i>Achyrrachaena mollis</i> Schauer	Blow-Wives	AH	FAC	Asteraceae	S
<i>Acmispon americanus</i> (Nuttall) Rydb. var. <i>americanus</i>	American Birds-foot Trefoil	AH	UPL	Fabaceae	O
<i>Acmispon brachycarpus</i> (Bentham) D.D. Sokoloff	Hill Lotus, Short-podded Hosackia	AH	.	Fabaceae	O
<i>Acmispon glaber</i> (Vogel) Brouillet var. <i>glaber</i>	Deerweed, California Broom	PH	.	Fabaceae	C
<i>Acmispon grandiflorus</i> (Bentham) Brouillet var. <i>grandiflorus</i>	Large-flowered Lotus or Hosackia	PH	.	Fabaceae	S
<i>Acmispon procumbens</i> (E. Greene) Brouillet var. <i>procumbens</i>	Silky California Broom	PH	.	Fabaceae	S
<i>Acmispon strigosus</i> (Nuttall) Brouillet var. <i>strigosus</i>	Strigose Lotus or Hosackia	AH	.	Fabaceae	C
<i>Acmispon wrangelianus</i> (Fischer & C. Meyer) D.D. Sokoloff	Chile Lotus or Hosackia	AH	.	Fabaceae	S
* <i>Acroptilon repens</i> (L.) DC. *	Russian Knapweed	AH	.	Asteraceae	S
<i>Agoseris retrorsa</i> (Bentham) E. Greene	Spear-leaved Mountain Dandelion	PH	.	Asteraceae	C
* <i>Agrostis stolonifera</i> L. [var. <i>palustris</i> (Hudson) Pers.] *	Creeping Bentgrass	PG	FACW	Poaceae	S
<i>Allium campanulatum</i> S. Watson	Sierra Onion	PG	.	Alliaceae	S
<i>Allium fimbriatum</i> S. Watson var. <i>fimbriatum</i>	Fringed Onion	PG	.	Alliaceae	O
<i>Allium howellii</i> var. <i>clokeyi</i> Traub	Mount Pinos Onion	PG	.	Alliaceae	O, 1B.3
<i>Allium lacunosum</i> var. <i>davisiae</i> (M.E. Jones) D. McNeal	Davis Onion	PG	.	Alliaceae	U
<i>Allium peninsulare</i> Lemmon var. <i>peninsulare</i>	Peninsular Onion	PG	.	Alliaceae	U
<i>Allophyllum gilioides</i> (Bentham) A.D. Grant & V. Grant ssp. <i>gilioides</i>	Stragglng Gilia	AH	FAC	Polemoniaceae	U
<i>Alnus rhombifolia</i> Nuttall	White Alder	T	FACW	Betulaceae	C
<i>Alopecurus saccatus</i> Vasey	Pacific Foxtail	AG	OBL	Poaceae	R
* <i>Amaranthus albus</i> L. *	Pigweed Amaranth	AH	FACU	Amaranthaceae	C
<i>Ambrosia acanthicarpa</i> Hooker	Burweed, Annual Bur-sage	AH	.	Asteraceae	C
<i>Ambrosia psilostachya</i> var. <i>californica</i> (Rydb.) Blake	Western Ragweed	BH	FACU	Asteraceae	C
<i>Ambrosia salsola</i> (T. & G. ex G.) Strother & B.G. Baldwin var. <i>salsola</i>	Burrobrush	S	(FACU)	Asteraceae	R
<i>Amorpha californica</i> Nuttall var. <i>californica</i>	California False Indigo	S	FAC	Fabaceae	C
<i>Amsinckia douglasiana</i> A. DC.	Douglas Fiddleneck	AH	.	Boraginaceae	U, 4.2
<i>Amsinckia intermedia</i> Fischer & C. Meyer	Common Fiddleneck	AH	.	Boraginaceae	C
<i>Amsinckia menziesii</i> (Lehm.) Nelson & J.F. Macbr. var. <i>menziesii</i>	Menzeis Fiddleneck	AH	.	Boraginaceae	S
<i>Amsinckia tessellata</i> Gray var. <i>gloriosa</i> (Suksd.) Hoover	Glorious Fiddleneck	AH	.	Boraginaceae	S
<i>Amsinckia tessellata</i> Gray var. <i>tessellata</i>	Devil's Lettuce	AH	.	Boraginaceae	S
<i>Amsinckia vernicosa</i> Hook. & Arn. var. <i>vernicosa</i>	Vernal Fiddleneck	AH	.	Boraginaceae	R
<i>Ancistrocarphus filagineus</i> Gray	Woolly Fishhooks	AH	.	Asteraceae	S
<i>Androsace elongata</i> ssp. <i>acuta</i> (E. Greene) G. Robb.	Rock-jasmine	AH	.	Primulaceae	R
<i>Anemopsis californica</i> Hooker & Arnott var. <i>californica</i>	Yerba Mansa	PH	OBL	Saururaceae	S
<i>Anisocoma acaulis</i> Torrey & A. Gray	Scale Bud	AH	.	Asteraceae	S
<i>Antirrhinum ovatum</i> Eastwood	Oval-leaved Snapdragon	AH	.	Plantaginaceae	R, 4.2
<i>Aphyllon californicum</i> ssp. <i>feudgei</i> (Munz) A.C. Schneid.	California Sagebrush Broom-rape	PH	.	Orobanchaceae	S
<i>Aphyllon fasciculatum</i> (Nuttall) Torr. & A. Gray	Clustered Broom-rape	PH	.	Orobanchaceae	O
<i>Aphyllon parishii</i> (Jeps.) A.C. Schneid. ssp. <i>parishii</i>	Parish Broom-rape	PH	.	Orobanchaceae	U
<i>Aphyllon tuberosum</i> (A. Gray) A. Gray	Chamise Broom-rape	PH	.	Orobanchaceae	O

Vascular Plants of the Ventura County Portion of the Cuyama Badlands Floristic Bioregion

By David L. Magney

Scientific Name	Common Name	Habit	Wetland Indicator		Family	Abundance Status
			Status	Family		
<i>Arceuthobium campylopodum</i> Engelm.	Western Dwarf Mistletoe	PH	.		Viscaceae	O
<i>Arctostaphylos glandulosa</i> ssp. <i>mollis</i> (J.E. Jones) P. Wells	Santa Ynez Mountains Manzanita	S	.		Ericaceae	C
<i>Arctostaphylos glauca</i> Lindley	Bigberry Manzanita	S	.		Ericaceae	C
<i>Arctostaphylos parryana</i> Lemmon ssp. <i>parryana</i>	Parry Manzanita	S	.		Ericaceae	C
<i>Arctostaphylos pungens</i> H.B. & K.	Pungent Manzanita	S	.		Ericaceae	S
<i>Argemone munita</i> Durand & Hilgard ssp. <i>munita</i>	Prickly Poppy, Chicalote	AH	.		Papaveraceae	S
<i>Artemisia douglasiana</i> Besser	Mugwort	PH	FAC		Asteraceae	C
<i>Artemisia dracuncululus</i> L.	Tarragon, Dragon Tarragon	PH	(FACW)		Asteraceae	C
<i>Artemisia tridentata</i> ssp. <i>parishii</i> (Gray) H.M. Hall & Clements	Parish Great Basin Sagebrush	S	.		Asteraceae	U
<i>Artemisia tridentata</i> Nuttall ssp. <i>tridentata</i>	Great Basin Sagebrush	S	.		Asteraceae	C
<i>Asclepias californica</i> E. Greene ssp. <i>californica</i>	California Milkweed	AH	.		Apocynaceae	C
<i>Asclepias eriocarpa</i> Bentham	Kotolo, Indian Milkweed	PH	.		Apocynaceae	C
<i>Asclepias erosa</i> Torrey	Desert Milkweed	PH	.		Apocynaceae	U
<i>Asclepias fascicularis</i> Decne.	Narrowleaf Milkweed	PH	FAC		Apocynaceae	C
<i>Asclepias vestita</i> Hooker & Arnott	Woolly Milkweed	PH	.		Apocynaceae	R
<i>Astragalus bicristatus</i> A. Gray	Crested Milkvetch	PH	.		Fabaceae	R
<i>Astragalus didymocarpus</i> Hook. & Arn. var. <i>didymocarpus</i>	Two-seeded Milkvetch	AH	.		Fabaceae	O
<i>Astragalus didymocarpus</i> var. <i>dispermus</i> (A. Gray) Jeps.	Dispersed Two-seeded Milkvetch	AH	.		Fabaceae	R
<i>Astragalus didymocarpus</i> var. <i>obispoensis</i> (Rydb.) Jeps.	San Luis Obispo Two-seeded Milkvetch	AH	.		Fabaceae	R
<i>Astragalus douglasii</i> (T. & G.) Gray var. <i>douglasii</i>	Douglas Milkvetch	PH	.		Fabaceae	S
<i>Astragalus douglasii</i> var. <i>parishii</i> (Gray) M.E. Jones	Parish Milkvetch	PH	.		Fabaceae	R
<i>Astragalus filipes</i> Gray	Thread-leaved Locoweed	PH	.		Fabaceae	U
<i>Astragalus gambelianus</i> E. Sheldon	Dwarf Locoweed	AH	.		Fabaceae	U
<i>Astragalus lentiginosus</i> var. <i>idriensis</i> M.E. Jones	Idria Freckled Locoweed	PH	UPL		Fabaceae	O
<i>Astragalus lentiginosus</i> Douglas var. <i>lentiginosus</i>	Freckled Milkvetch	PH	UPL		Fabaceae	R
<i>Astragalus lentiginosus</i> var. <i>nigricalycis</i> M.E. Jones	Black-sepaled Freckled Locoweed	PH	UPL		Fabaceae	U
<i>Astragalus macrodon</i> (Hook. & Arn.) Gray	Salinas Valley Milkvetch	PH	.		Fabaceae	R, 4.3
<i>Astragalus oxyphysus</i> Gray	Robust Milkvetch	PH	.		Fabaceae	R
<i>Astragalus pachypus</i> E. Greene var. <i>pachypus</i>	Thickpod Milkvetch	PH	.		Fabaceae	S
<i>Astragalus purshii</i> var. <i>tinctus</i> M.E. Jones	Pursh Woollypod	PH	.		Fabaceae	C
<i>Athysanus pusillus</i> (Hook.) Greene	Dwarf Athysanus	AH	.		Brassicaceae	O
<i>Athysanus unilateralis</i> (M.E. Jones) Jeps.	Ladiestongue Mustard	AH	.		Brassicaceae	R
<i>Atriplex argentea</i> var. <i>mohavensis</i> M.E. Jones	Mojave Silverscale	AH	FAC		Chenopodiaceae	R
<i>Atriplex canescens</i> (Pursh) Nuttall var. <i>canescens</i>	Fourwing or Hoary Saltbush	S	(FACU)		Chenopodiaceae	O
<i>Atriplex canescens</i> var. <i>laciniata</i> Parish in W.L. Jepson	Caleb Saltbush	S	(FACU)		Chenopodiaceae	R
<i>Atriplex linearis</i> S. Watson	Narrowleaf Fourwing Saltbush	S	.		Chenopodiaceae	R
<i>Atriplex polycarpa</i> (Torrey) S. Watson	Common Saltbush, Allscale	S	FACU		Chenopodiaceae	U
* <i>Atriplex rosea</i> L. *	Redscale	AH	FACU		Chenopodiaceae	S
<i>Atriplex serenana</i> Nelson var. <i>serenana</i>	Bractscale	AH	FAC		Chenopodiaceae	S, 1B.2
* <i>Avena barbata</i> Link. *	Slender Wild Oat	AG	.		Poaceae	C
<i>Baccharis glutinosa</i> Pers.	Marsh Baccharis	S	FACW		Asteraceae	S
<i>Baccharis salicifolia</i> (Ruiz Lopez & Pavon) Pers. ssp. <i>salicifolia</i>	Mulefat	S	FAC		Asteraceae	C
<i>Balsamorhiza deltoidea</i> Nuttall	Balsamroot, Chuchupate	PH	.		Asteraceae	C
<i>Bloomeria crocea</i> (Torrey) Cov. ssp. <i>crocea</i>	Goldenstars	PG	.		Themidaceae	C
<i>Bloomeria crocea</i> var. <i>montana</i> (E. Greene) Ingram	Mountain Goldenstars	PG	.		Themidaceae	O

Vascular Plants of the Ventura County Portion of the Cuyama Badlands Floristic Bioregion

By David L. Magney

Scientific Name	Common Name	Habit	Wetland Indicator		Abundance Status
			Status	Family	
<i>Boechnera californica</i> (Rollins) Windham & Al-Shehbaz	California Rockcress	PH	.	Brassicaceae	U
<i>Boechnera pulchra</i> (M.E. Jones ex S. Watson) W.A. Weber	Desert Rock Cress	PH	.	Brassicaceae	C
<i>Boechnera sparsiflora</i> (Nutt.) Dorn	Few-flowered Rock Cress	PH	.	Brassicaceae	C
<i>Boykinia rotundifolia</i> C. Parry	Roundleaved Boykinia	PH	FACW	Saxifragaceae	U
<i>Brickellia californica</i> (T. & G.) Gray	California Brickellbush	S	FACU	Asteraceae	C
<i>Brickellia nevinii</i> Gray	Nevin Brickellbush	S	.	Asteraceae	C
* <i>Bromus arenarius</i> Labill. *	Australian Brome	AG	FACU	Poaceae	R
<i>Bromus arizonicus</i> (Shear) Stebbins	Arizona Brome	AG	.	Poaceae	S
* <i>Bromus diandrus</i> Roth. ssp. <i>diandrus</i> *	Ripgut Grass	AG	(FACU)	Poaceae	C
* <i>Bromus hordeaceus</i> L. ssp. <i>hordeaceus</i> *	Soft Chess	AG	FACU	Poaceae	C
* <i>Bromus rubens</i> L. *	Red Brome	AG	UPL	Poaceae	C
* <i>Bromus tectorum</i> L. *	Downy Brome, Cheat Grass	AG	.	Poaceae	C
<i>Calandrinia menziesii</i> (Hook.) Torr. & A. Gray	Redmaids	AH	FACU	Montiaceae	C
<i>Calochortus kennedyi</i> Porter var. <i>kennedyi</i>	Red Mariposa Lily	PG	.	Liliaceae	S
<i>Calochortus splendens</i> Benth.	Splendid or Lilac Mariposa Lily	PG	.	Liliaceae	S
<i>Calochortus venustus</i> Benth.	Butterfly Mariposa Lily	PG	.	Liliaceae	C
<i>Calyptidium monandrum</i> Nuttall	Common Calyptidium, Sand Cress	AH	.	Montiaceae	C
<i>Calyptidium parryi</i> Gray var. <i>parryi</i>	Parry Calyptidium	AH	.	Montiaceae	S
<i>Camissonia campestris</i> (E. Greene) Raven cf. ssp. <i>campestris</i>	Mojave Sun-cup	AH	.	Onagraceae	O
<i>Camissonia campestris</i> ssp. <i>obispoensis</i> Raven	San Luis Obispo Sun-cup	AH	.	Onagraceae	R
<i>Camissonia kernensis</i> (Munz) P.H. Raven ssp. <i>kernensis</i>	Kern County Evening Primrose	AH	.	Onagraceae	R
<i>Camissonia strigulosa</i> (Fischer & C. Meyer) Raven	Strigose Primrose	AH	.	Onagraceae	O
<i>Camissoniopsis confusa</i> (P.H. Raven) W.L. Wagner & Hoch	Confusing Primrose	AH	.	Onagraceae	U
<i>Camissoniopsis hirtella</i> (E. Greene) W.L. Wagner & Hoch	Small-haired Primrose	AH	.	Onagraceae	O
<i>Camissoniopsis intermedia</i> (P.H. Raven) W.L. Wagner & Hoch	Intermediate Sun Cups	AH	.	Onagraceae	C
<i>Camissoniopsis luciae</i> (P.H. Raven) W.L. Wagner & Hoch	Santa Lucia Sun-cup	AH	.	Onagraceae	R
<i>Camissoniopsis micrantha</i> (Sprengel) W.L. Wagner & Hoch	Tiny Primrose	AH	.	Onagraceae	S
* <i>Capsella bursa-pastoris</i> (L.) Medikus var. <i>bursa-pastoris</i> *	Shepherd's Purse	AH	FACU	Brassicaceae	O
<i>Carex praegracilis</i> W. Boott	Clustered Field Sedge	PG	FACW	Cyperaceae	O
<i>Castilleja applegatei</i> ssp. <i>martinii</i> (Abrams) Chuang & Heckard	Martin Indian Paintbrush	PH	.	Orobanchaceae	C
<i>Castilleja exserta</i> (A.A. Heller) Chuang & Heckard ssp. <i>exserta</i>	Purple Owl's Clover	AH	.	Orobanchaceae	C
<i>Castilleja linariifolia</i> Benth.	Linaria-leaved Indian Paintbrush	PH	.	Orobanchaceae	S
<i>Castilleja minor</i> ssp. <i>spiralis</i> (Jeps.) Chuang & Heckard	Large-flowered Annual Indian Paintbrush	AH	OBL	Orobanchaceae	S
<i>Castilleja plagiotoma</i> A. Gray	Mojave Indian Paintbrush	PH	.	Orobanchaceae	R
<i>Castilleja subinclusa</i> E. Greene ssp. <i>subinclusa</i>	Long-leaved or Jepson Indian Paintbrush	PH	.	Orobanchaceae	C
<i>Caulanthus amplexicaulis</i> S. Watson var. <i>amplexicaulis</i>	Clasping-leaved Jewelflower	AH	.	Brassicaceae	U
<i>Caulanthus anceps</i> Payson	Lemmon Mustard	AH	.	Brassicaceae	R
<i>Caulanthus californicus</i> (S. Watson) Payson	California Jewelflower	AH	.	Brassicaceae	R, FE
<i>Caulanthus coulteri</i> S. Watson var. <i>coulteri</i>	Coulter Jewelflower	AH	.	Brassicaceae	C
<i>Caulanthus heterophyllus</i> (Nutt.) Payson var. <i>heterophyllus</i>	Different-leaved Jewelflower	AH	.	Brassicaceae	U
<i>Caulanthus inflatus</i> S. Watson	Desert Candle	AH	.	Brassicaceae	R
<i>Caulanthus lasiophyllus</i> (Hooker & Arnott) Payson	California Mustard	AH	.	Brassicaceae	C
<i>Caulanthus lemmonii</i> S. Watson	Lemmon Jewelflower	AH	.	Brassicaceae	U, 1B.2
<i>Ceanothus cuneatus</i> (Hooker) Nuttall ex Torr. & Gray var. <i>cuneatus</i>	Buck Brush, Wedgeleaf Ceanothus	S	.	Rhamnaceae	C
<i>Ceanothus dentatus</i> T. & G.	Dwarf Ceanothus	S	.	Rhamnaceae	R

Vascular Plants of the Ventura County Portion of the Cuyama Badlands Floristic Bioregion

By David L. Magney

Scientific Name	Common Name	Habit	Wetland Indicator		Family	Abundance Status
			Status	Family		
<i>Ceanothus leucodermis</i> E. Greene	Chaparral Whitethorn	S	.		Rhamnaceae	C
<i>Ceanothus palmeri</i> Trel.	Palmer Ceanothus	S	.		Rhamnaceae	O
<i>Ceanothus pauciflorus</i> DC.	Few-flowered Ceanothus	S	.		Rhamnaceae	C
* <i>Centaurea diluta</i> Aiton *	North African Knapweed	AH	.		Asteraceae	R
* <i>Centaurea melitensis</i> L. *	Tocalote, Napa Thistle	AH	.		Asteraceae	C
* <i>Centaurea solstitialis</i> L. *	Yellow Star-thistle	AH	.		Asteraceae	C
<i>Centrostegia thurberi</i> var. <i>macrotheca</i> (J.T. Howell) Goodman	Thurber Spineflower	AH	.		Polygonaceae	R
<i>Centrostegia thurberi</i> Gray ex Benth. var. <i>thurberi</i>	Thurber Spineflower	AH	.		Polygonaceae	S
<i>Cercocarpus betuloides</i> Torrey & A. Gray var. <i>betuloides</i>	Birchleaf Mountain Mahogany	S	.		Rosaceae	C
<i>Cercocarpus ledifolius</i> var. <i>intermontanus</i> N. Holmgren	Curlleaf Mountain Mahogany	S	.		Rosaceae	U
<i>Cercocarpus ledifolius</i> Nuttall var. <i>ledifolius</i>	Mountain Mahogany	S	.		Rosaceae	U
<i>Chaenactis fremontii</i> A. Gray	Desert Pincushion	AH	.		Asteraceae	R
<i>Chaenactis glabriuscula</i> DC. var. <i>glabriuscula</i>	Common Yellow Pincushion	AH	.		Asteraceae	C
<i>Chaenactis glabriuscula</i> var. <i>lanosa</i> (DC.) H.M. Hall	Woolly Yellow Pincushion	AH	.		Asteraceae	S
<i>Chaenactis glabriuscula</i> var. <i>megacephala</i> A. Gray	Big-flowered Yellow Pincushion	AH	.		Asteraceae	R
<i>Chaenactis xantiana</i> Gray	Xantus Pincushion	AH	.		Asteraceae	S
<i>Chamaesyce albomarginata</i> (Torrey & A. Gray) Small	Rattlesnake Spurge	AH	.		Euphorbiaceae	O
* <i>Chenopodium album</i> L. *	Lamb's Quarters, Pigweed	AH	FACU		Chenopodiaceae	C
<i>Chenopodium californicum</i> (S. Watson) S. Watson	California Goosefoot	PH	.		Chenopodiaceae	C
<i>Chenopodium pratericola</i> Rydb.	Narrow-leaved Goosefoot	AH	.		Chenopodiaceae	R
<i>Chorizanthe staticoides</i> Bentham var. <i>staticoides</i>	Turkish Rugging	AH	.		Polygonaceae	O
<i>Chorizanthe uniaristata</i> T. & G.	One-awned Spineflower	AH	.		Polygonaceae	U
<i>Chorizanthe watsonii</i> T. & G.	Watson Spineflower	AH	.		Polygonaceae	U
<i>Chorizanthe xanti</i> S. Watson var. <i>xanti</i>	Xantus Spineflower	AH	.		Polygonaceae	S
<i>Chrysothamnus viscidiflorus</i> (Hook.) Nutt. ssp. <i>viscidiflorus</i>	Yellow Rabbitbrush	S	.		Asteraceae	R
<i>Cicuta douglasii</i> (DC.) Coulter & Rose	Western Water-hemlock	PH	OBL		Apiaceae	R
<i>Cirsium occidentale</i> (Nuttall) Jepson var. <i>occidentale</i>	Cobweb Thistle	BH	.		Asteraceae	O
<i>Cirsium occidentale</i> var. <i>venustum</i> (E. Greene) Jepson	Red or Venus Thistle	BH	.		Asteraceae	O
* <i>Cirsium vulgare</i> (Savi) Tenore *	Common or Bull Thistle	BH	FACU		Asteraceae	S
<i>Clarkia bontae</i> (Spach) Lewis & Lewis	Punchbowl Godetia	AH	.		Onagraceae	C
<i>Clarkia cylindrica</i> (Jepson) H. Lewis & M. Lewis ssp. <i>cylindrica</i>	Cylindrical Godetia	AH	.		Onagraceae	O
<i>Clarkia rhomboidea</i> Douglas	Rhomboid Clarkia	AH	.		Onagraceae	U
<i>Clarkia tembloriensis</i> ssp. <i>tembloriensis</i> Vasek	Temblor Clarkia	AH	.		Onagraceae	R
<i>Claytonia exigua</i> T. & G. ssp. <i>exigua</i>	Small Miner's Lettuce	AH	.		Montiaceae	S
<i>Claytonia exigua</i> ssp. <i>glauca</i> (T. & G.) John M. Mill. & K.L. Chambers	Blue-eyed Small Miner's Lettuce	AH	.		Montiaceae	R
<i>Claytonia parviflora</i> Hook. ssp. <i>parviflora</i>	Small-flowered Miner's Lettuce	AH	FACU		Montiaceae	O
<i>Claytonia perfoliata</i> Donn ex Willd. ssp. <i>perfoliata</i>	Miner's Lettuce	AH	FAC		Montiaceae	C
<i>Clematis lasiantha</i> Nuttall	Pipstem Clematis	PV	.		Ranunculaceae	C
<i>Clematis ligusticifolia</i> Nuttall	Virgin's Bower	PV	FAC		Ranunculaceae	C
<i>Clematis pauciflora</i> Nuttall	Ropevine	PV	.		Ranunculaceae	R
<i>Collinsia bartsiiifolia</i> var. <i>davidsonii</i> (Parish) V. Newsom	Davidson White Chinese Houses	AH	.		Plantaginaceae	U
<i>Collinsia callosa</i> Parish	Large-fruited Blue-eyed Mary	AH	.		Plantaginaceae	S
<i>Conyza canadensis</i> (L.) Cronq.	Horseweed	AH	FACU		Asteraceae	C
<i>Cordylanthus rigidus</i> (Benth.) Jepson ssp. <i>rigidus</i>	Rigid Bird's Beak	AH	.		Orobanchaceae	C
<i>Corethrogyne filaginifolia</i> (Hook. & Arn.) Nutt. var. <i>filaginifolia</i>	California Cudweed-aster	PH	.		Asteraceae	C

Vascular Plants of the Ventura County Portion of the Cuyama Badlands Floristic Bioregion

By David L. Magney

Scientific Name	Common Name	Habit	Wetland Indicator		Family	Abundance Status
			Status	Family		
<i>Cryptantha clevelandii</i> E. Greene var. <i>clevelandii</i>	Cleveland Forget-Me-Not	AH	.		Boraginaceae	C
<i>Cryptantha clevelandii</i> var. <i>florosa</i> I.M. Johnston	Coastal Forget-Me-Not	AH	.		Boraginaceae	S
<i>Cryptantha decipiens</i> (M.E. Jones) A.A.Heller	Gravel Forget-Me-Not	AH	.		Boraginaceae	O
<i>Cryptantha echinella</i> E. Greene	Prickly Forget-Me-Not	AH	.		Boraginaceae	S
<i>Cryptantha hispidissima</i> Greene	Bristly Forget-Me-Not	AH	.		Boraginaceae	O
<i>Cryptantha intermedia</i> (A. Gray) E. Greene var. <i>intermedia</i>	Common Forget-Me-Not	AH	.		Boraginaceae	C
<i>Cryptantha juniperensis</i> R.B. Kelley & M.G. Simpson	Rigid Nevada Forget-Me-Not	AH	.		Boraginaceae	O
<i>Cryptantha muricata</i> (Hooker & Arnott) Nelson & Macbr. var. <i>muricata</i>	Showy Prickly Forget-Me-Not	AH	.		Boraginaceae	O
<i>Cryptantha nemaclada</i> E. Greene	Colusa Forget-Me-Not	AH	.		Boraginaceae	S
<i>Cryptantha nevadensis</i> A. Nelson & Kennedy var. <i>nevadensis</i>	Nevada Forget-Me-Not	AH	.		Boraginaceae	S
<i>Cryptantha oxygona</i> (A. Gray) E. Greene	Sharp-not Forget-Me-Not	AH	.		Boraginaceae	S
<i>Cryptantha rattanii</i> E. Greene	Rattan's Forget-Me-Not	AH	.		Boraginaceae	R, 4.3
<i>Cryptantha simulans</i> E. Greene	Pine Forget-Me-Not	AH	.		Boraginaceae	S
<i>Cryptantha sparsiflora</i> (E. Greene) E. Greene	Few-flowered Forget-Me-Not	AH	.		Boraginaceae	R
<i>Cuscuta denticulata</i> Engelmann	Desert dodder	AV	.		Convolvulaceae	R
<i>Cuscuta subinclusa</i> Durand & Hilg.	Canyon Dodder	AV	.		Convolvulaceae	O
<i>Cycladenia humilis</i> var. <i>venusta</i> (Eastwood) Munz	Elegant Cycladenia	PH	.		Apocynaceae	R
<i>Cylindropuntia californica</i> var. <i>parkeri</i> (J.M. Coulter) Pinkava	Cane or Snake Cholla	S	.		Cactaceae	U
<i>Cylindropuntia prolifera</i> (Engelm.) F.M. Kunth in C. Backeberge & F.M. Knuth	Coastal Cholla	S	.		Cactaceae	S
<i>Delphinium gypsophilum</i> Ewan ssp. <i>gypsophilum</i>	Gypsum Larkspur	PH	.		Ranunculaceae	U, 4.2
<i>Delphinium hesperium</i> ssp. <i>pallescens</i> (Ewan) F.H. Lewis & Epling	Pale-flowered Western Larkspur	PH	.		Ranunculaceae	R
<i>Delphinium parishii</i> ssp. <i>pallidum</i> (Munz) M.J. Warnock	Pale-flowered Larkspur	PH	.		Ranunculaceae	C
<i>Delphinium parryi</i> A. Gary ssp. <i>parryi</i>	Parry Larkspur	PH	.		Ranunculaceae	C
<i>Delphinium parryi</i> ssp. <i>purpureum</i> (F. Lewis & Epling) M.J. Warnock	Mount Pinos Larkspur	PH	.		Ranunculaceae	C, 4.3
<i>Dendromecon rigida</i> Bentham ssp. <i>rigida</i>	Bush Poppy	S	.		Papaveraceae	C
<i>Descurainia pinnata</i> ssp. <i>brachycarpa</i> (Richardson) Detling	Short-pod Tansy Mustard	AH	.		Brassicaceae	S
<i>Descurainia pinnata</i> ssp. <i>glabra</i> (Wooton & Standl.) Detling	Naked Western Tansy Mustard	AH	.		Brassicaceae	U
<i>Descurainia pinnata</i> ssp. <i>halictorum</i> (Cockerell) Detl.	Western Tansy Mustard	AH	.		Brassicaceae	R
* <i>Descurainia sophia</i> (L.) Webb *	Tansy Mustard	AH	.		Brassicaceae	S
<i>Diplacus bigelovii</i> (Gray) Nesom var. <i>bigelovii</i>	Bigelow Monkeyflower	AH	.		Phrymaceae	S
<i>Diplacus fremontii</i> (Benth.) Nesom var. <i>fremontii</i>	Fremont Monkeyflower	AH	.		Phrymaceae	S
<i>Diplacus johnstonii</i> (A.L. Grant) Nesom	Johnston Monkeyflower	AH	.		Phrymaceae	S
<i>Dipterostemon capitatus</i> (Benth.) Rydb. ssp. <i>pauciflorus</i> (Torr.) R.E. Preston	Few-flowered Blue Dicks	PG	?		Themidaceae	R
<i>Dipterostemon capitatus</i> (Bentham) Rydb. ssp. <i>capitatus</i>	Blue Dicks	PG	FACU		Themidaceae	C
<i>Distichlis spicata</i> (L.) E. Greene	Saltgrass	PG	FAC		Poaceae	C
<i>Dudleya cymosa</i> ssp. <i>pumila</i> (Rose) K. Nakai	Santa Monica Mtns. Live-forever	PH	.		Crassulaceae	U
<i>Dudleya lanceolata</i> (Nuttall) Britton & Rose	Lanceleaf Live-forever	PH	.		Crassulaceae	C
<i>Eastwoodia elegans</i> Brandegee	Yellow Mock Aster	S	.		Asteraceae	R
<i>Eleocharis parishii</i> Britt.	Parish Spikerush	PG	FACW		Cyperaceae	C
<i>Eleocharis quinqueflora</i> (Hartmann) O. Schwarz	Few-flowered Spikerush	PG	OBL		Cyperaceae	R
<i>Elymus condensatus</i> J. Presl	Giant Wildrye	PG	FACU		Poaceae	C
<i>Elymus elymoides</i> (Raf.) Swezey ssp. <i>elymoides</i>	Bottlebrush Squirreltail	PG	FACU		Poaceae	C
<i>Elymus multisetus</i> (J.G. Smith) Burt Davy	Bottlebrush Squirreltail	PG	.		Poaceae	S
<i>Elymus trachycaulus</i> (Link) Shinn. ssp. <i>trachycaulus</i>	Slender Wheatgrass	PG	FACU		Poaceae	S
<i>Elymus triticoides</i> Buckl. ssp. <i>triticoides</i>	Creeping Wildrye	PG	FAC		Poaceae	C

Vascular Plants of the Ventura County Portion of the Cuyama Badlands Floristic Bioregion

By David L. Magney

Scientific Name	Common Name	Habit	Wetland Indicator		Family	Abundance Status
			Status	Family		
<i>Emmenanthe penduliflora</i> Benth. var. <i>penduliflora</i>	Whispering Bells	AH	.		Hydrophyllaceae	C
<i>Encelia actoni</i> Elmer	Acton Brittlebush	S	.		Asteraceae	S
<i>Encelia frutescens</i> (Gray) Gray	Brittlebush, Incienso	S	.		Asteraceae	R
<i>Encelia virginiensis</i> Nelson	Brittlebush	S	.		Asteraceae	R
<i>Ephedra californica</i> S. Watson	California Desert Tea, Cañatillo	S	.		Ephedraceae	R
<i>Ephedra nevadensis</i> S. Watson	Nevada Ephedra or Mormon-tea	S	.		Ephedraceae	R
<i>Ephedra viridis</i> Coville	Green Ephedra or Mormon-tea	S	.		Ephedraceae	C
<i>Epilobium canum</i> (Greene) Raven ssp. <i>canum</i>	California Fuchsia	PH	.		Onagraceae	C
<i>Epilobium canum</i> ssp. <i>latifolium</i> (Hook.) Raven	Broad-leaved California Fuchsia	PH	.		Onagraceae	C
<i>Epilobium ciliatum</i> Raf. ssp. <i>ciliatum</i>	Northern Willow-herb	AH	FACW		Onagraceae	C
<i>Eremalche exilis</i> (A. Gray) E. Greene	White-flowered Mallow	AH	.		Malvaceae	R
<i>Eremalche parryi</i> ssp. <i>kernensis</i> (C. Wolf) D. Bates	Kern Mallow	AH	.		Malvaceae	R, FE, 1B.1
<i>Eremalche parryi</i> (E. Greene) E. Greene ssp. <i>parryi</i>	Parry Mallow	AH	.		Malvaceae	U
<i>Eremothera boothii</i> ssp. <i>decorticans</i> (Hooker & Arnott) W.L. Wagner & Hoch	Booth Shreading Primrose	AH	.		Onagraceae	C
<i>Eremothera boothii</i> ssp. <i>desertorum</i> (Munz) W.L. Wagner & Hoch	Desert Shredding Primrose	AH	.		Onagraceae	R
<i>Eriastrum densifolium</i> ssp. <i>elongatum</i> (Benth.) H. Mason	Elongate Woolly Star	PH	.		Polemoniaceae	O
<i>Eriastrum hooveri</i> (Jepson) H. Mason	Hoover Woolly Star	AH	.		Polemoniaceae	R
<i>Eriastrum pluriflorum</i> (A.A. Heller) H. Mason ssp. <i>pluriflorum</i>	Woolly Star	AH	.		Polemoniaceae	S
<i>Eriastrum pluriflorum</i> ssp. <i>sherman-hoytae</i> (T.T. Craig) H. Mason	Mrs. Hoyt's Woolly Star	AH	.		Polemoniaceae	R
<i>Eriastrum sapphirinum</i> (Eastwood) H. Mason ssp. <i>sapphirinum</i>	Sapphire Woolly Star	AH	.		Polemoniaceae	S
<i>Eriastrum signatum</i> D. Gowen	Moroon-spotted Woolly Star	AH	.		Polemoniaceae	C
<i>Ericameria linearifolia</i> (DC.) Urb. & Wussow	Interior Goldenbush, Stenopsis	S	.		Asteraceae	C
<i>Ericameria nauseosa</i> var. <i>hololeuca</i> (A. Gray) G.L. Nesom & G.I. Baird	White Rubber Rabbitbrush	S	.		Asteraceae	O
<i>Ericameria nauseosa</i> var. <i>mohavensis</i> (Greene) G.L. Nesom & G.I. Baird	Mojave Rubber Rabbitbrush	S	.		Asteraceae	C
<i>Ericameria nauseosa</i> var. <i>oreophila</i> (A. Nelson) G.L. Nesom & G.I. Baird	Common Rubber Rabbitbrush	S	.		Asteraceae	S
<i>Ericameria teretifolia</i> (Durand & Hilgard) Jeps.	Round-leaved Rabbitbrush	S	.		Asteraceae	R
<i>Eriodictyon crassifolium</i> Benth. var. <i>crassifolium</i>	Thickleaf Yerba Santa	S	.		Namaceae	C
<i>Eriodictyon crassifolium</i> var. <i>nigrescens</i> Brand	Thickleaf Yerba Santa	S	.		Namaceae	C
<i>Eriodictyon trichocalyx</i> A.A. Heller var. <i>trichocalyx</i>	Yerba Santa	S	.		Namaceae	U
<i>Eriogonum angulosum</i> Benth.	Angle-stemmed Buckwheat	AH	.		Polygonaceae	S
<i>Eriogonum baileyi</i> S. Watson var. <i>baileyi</i>	Bailey Buckwheat	AH	.		Polygonaceae	O
<i>Eriogonum cithariforme</i> var. <i>agninum</i> (E. Greene) Reveal	Santa Ynez Wild Buckwheat	AH	.		Polygonaceae	S
<i>Eriogonum cithariforme</i> S. Watson var. <i>cithariforme</i>	Cithara Buckwheat	AH	.		Polygonaceae	C
<i>Eriogonum clavatum</i> Small	Hoover Little Trumpet	AH	.		Polygonaceae	S
<i>Eriogonum davidsonii</i> E. Greene	Davidson Buckwheat	AH	.		Polygonaceae	S
<i>Eriogonum elegans</i> Greene	Elegant Buckwheat	AH	.		Polygonaceae	U, 4.3
<i>Eriogonum elongatum</i> Benth. var. <i>elongatum</i>	Long-stemmed Buckwheat	PH	.		Polygonaceae	C
<i>Eriogonum fasciculatum</i> var. <i>polifolium</i> (A. DC.) Torrey & A. Gray	Hoary California Buckwheat	S	.		Polygonaceae	C
<i>Eriogonum gossypinum</i> Curran	Cottony Buckwheat	AH	.		Polygonaceae	R, 4.2
<i>Eriogonum gracillimum</i> S. Watson	Slender Buckwheat	AH	.		Polygonaceae	R
<i>Eriogonum heermannii</i> Durand & Hilg. var. <i>heermannii</i>	Heerman Buckwheat	S	.		Polygonaceae	S
<i>Eriogonum kennedyi</i> var. <i>austromontanum</i> Munz & I.M. Johnston	Southern Mountain Buckwheat	PH	.		Polygonaceae	U, T, 1B.2
<i>Eriogonum kennedyi</i> Porter ex S. Watson var. <i>kennedyi</i>	Kennedy Buckwheat	PH	.		Polygonaceae	O
<i>Eriogonum maculatum</i> A.A. Heller	Buckwheat	AH	.		Polygonaceae	S
<i>Eriogonum molestum</i> Greene	Pine Buckwheat	AH	.		Polygonaceae	U

Vascular Plants of the Ventura County Portion of the Cuyama Badlands Floristic Bioregion

By David L. Magney

Scientific Name	Common Name	Habit	Wetland Indicator		Family	Abundance Status
			Status	Family		
<i>Eriogonum nudum</i> var. <i>pauciflorum</i> S. Watson	Tibinagua	PH	.		Polygonaceae	C
<i>Eriogonum nudum</i> var. <i>westonii</i> (S. Stokes) J.T. Howell	Weston Barestem Buckwheat	PH	.		Polygonaceae	S
<i>Eriogonum ordii</i> S. Watson	Ord Buckwheat	AH	.		Polygonaceae	S
<i>Eriogonum roseum</i> Durand & Hilg.	Rose Buckwheat	AH	.		Polygonaceae	S
<i>Eriogonum saxatile</i> S. Watson	Rock Buckwheat	AH	.		Polygonaceae	S
<i>Eriogonum umbellatum</i> var. <i>munzii</i> Reveal	Munz Yellow Buckwheat	S	.		Polygonaceae	O
<i>Eriogonum viridescens</i> A. Heller	Green Buckwheat	AH	.		Polygonaceae	U
<i>Eriogonum wrightii</i> var. <i>subscaposum</i> S. Watson	Short-scape Wright Buckwheat	S	.		Polygonaceae	C
<i>Eriophyllum ambiguum</i> (A. Gray) A. Gray var. <i>ambiguum</i>	Ambiguous Woolly Daisy	AH	.		Asteraceae	R
<i>Eriophyllum confertiflorum</i> (DC.) A. Gray var. <i>confertiflorum</i>	Golden Yarrow	PH	.		Asteraceae	C
<i>Eriophyllum confertiflorum</i> var. <i>tanacetiflorum</i> (Greene) Jeps.	Tansyleaf Golden Yarrow	PH	.		Asteraceae	R, 4.3
<i>Eriophyllum jepsonii</i> Greene	Jepson Woolly Yarrow	AH	.		Asteraceae	R, 4.3
<i>Eriophyllum pringlei</i> A. Gray	Pringle Golden Yarrow	AH	.		Asteraceae	O
* <i>Erodium cicutarium</i> (L.) L'Her. *	Redstem Filaree	AH	.		Geraniaceae	C
<i>Erysimum capitatum</i> (Dougl.) E. Greene var. <i>capitatum</i>	Western Wallflower	AH/BH	.		Brassicaceae	C
<i>Erysimum moniliforme</i> Eastwood	Yellow Wallflower	BH	.		Brassicaceae	R
<i>Erythranthe androsacea</i> (Greene) N.S. Fraga	Naked Sepal Monkeyflower	AH	.		Phrymaceae	S
<i>Erythranthe cardinalis</i> (Douglas ex Benth.) Spach	Scarlet Monkeyflower	PH	FACW		Phrymaceae	C
<i>Erythranthe guttata</i> (Fischer ex DC.) Nesom [<i>Mimulus guttatus</i> DC.]	Common Streamside Monkeyflower	A/PH	OBL		Phrymaceae	C
<i>Erythranthe parishii</i> (E. Greene) G.L. Nesom & N.S. Fraga	Parish's Monkeyflower	AH	FACU		Phrymaceae	R
<i>Eschscholzia caespitosa</i> Bentham ssp. <i>caespitosa</i>	Tufted Poppy	BH	.		Papaveraceae	O
<i>Eschscholzia californica</i> Chamisso in C.G.D. ssp. <i>californica</i>	California Poppy	AH	.		Papaveraceae	C
<i>Eschscholzia hypocoides</i> Bentham	Gypsum Poppy	AH	.		Papaveraceae	R, 4.3
<i>Eschscholzia lemmonii</i> Greene ssp. <i>lemmonii</i>	Lemmon Poppy	AH	.		Papaveraceae	R
<i>Eschscholzia minutiflora</i> S. Watson	Tiny-flowered Poppy	AH	.		Papaveraceae	U
<i>Eulobus californicus</i> Torrey & A. Gray	Mustard Primrose	AH	.		Onagraceae	C
<i>Forestiera pubescens</i> Nutt.	Desert Olive, Dwarf Swamp Privet	S	FACU		Oleaceae	U
<i>Frangula californica</i> ssp. <i>tomentella</i> (Benth.) Kartesz & Gandhi	Hoary Coffeeberry	S	.		Rhamnaceae	C
<i>Frankenia salina</i> (Molina) I.M. Johnston	Alkali Heath	PH	FACW		Frankeniaceae	S
<i>Fritillaria agrestis</i> E. Greene	Stink Bells	PH	FAC		Liliaceae	U, 4.2
<i>Fritillaria biflora</i> Lindley var. <i>biflora</i>	Chocolate Lily, Mission Bells	PH	.		Liliaceae	S
<i>Galium andrewsii</i> A. Gray ssp. <i>andrewsii</i>	Pine Mat, Phlox-leaved Bedstraw	PH	.		Rubiaceae	C
<i>Galium andrewsii</i> ssp. <i>intermedium</i> Dempster & Stebb.	Intermediate Pine Mat	PH	.		Rubiaceae	C
<i>Galium angustifolium</i> Nuttall ssp. <i>angustifolium</i>	Chaparral Bedstraw	S	.		Rubiaceae	C
<i>Galium aparine</i> L.	Goose Grass	AH	FACU		Rubiaceae	C
<i>Galium hallii</i> Munz & I.M. Johnston	Nodding Bedstraw	PH	.		Rubiaceae	C
<i>Garrya flavescens</i> S. Watson ssp. <i>flavescens</i>	Silk-tassel Bush	S	.		Garryaceae	O
<i>Garrya flavescens</i> ssp. <i>pallida</i> (Eastwood) Dahling	Pallid Silk-tassel Bush	S	.		Garryaceae	S
<i>Gilia achilleifolia</i> Benth. ssp. <i>achilleifolia</i>	Yarrow-leaved Gilia	AH	.		Polemoniaceae	O
<i>Gilia austro-occidentalis</i> (A.D. & V.E. Grant) A.D. & V.E. Grant	Southwestern Gilia	AH	.		Polemoniaceae	U
<i>Gilia brecciarum</i> M.E. Jones ssp. <i>brecciarum</i>	Breccia Gilia	AH	.		Polemoniaceae	O
<i>Gilia capitata</i> ssp. <i>abrotanifolia</i> (E. Greene) V. Grant	Blue Field Gilia	AH	.		Polemoniaceae	C
<i>Gilia interior</i> (Mason & A. Grant) A. Grant	Slender-flowered Gilia	AH	.		Polemoniaceae	R, 4.3
<i>Gilia jacens</i> A. Grant & V. Grant	Purple-flowered Breccia Gilia	AH	.		Polemoniaceae	U
<i>Gilia latiflora</i> ssp. <i>cuyamensis</i> A. & V. Grant	Cuyama Gilia	AH	.		Polemoniaceae	U, 4.3

Vascular Plants of the Ventura County Portion of the Cuyama Badlands Floristic Bioregion

By David L. Magney

Scientific Name	Common Name	Habit	Wetland Indicator		Family	Abundance Status
			Status	Family		
<i>Gilia latiflora</i> ssp. <i>davyi</i> (Milliken) A. & V. Grant	Davy Broad-flowered Gilia	AH	.		Polemoniaceae	U
<i>Gilia latiflora</i> (Gray) Gray ssp. <i>latiflora</i>	Broad-flowered Gilia	AH	.		Polemoniaceae	R
<i>Gilia malior</i> A.G. Day & V.E. Grant	Scrub Gilia	AH	.		Polemoniaceae	R
<i>Gilia minor</i> A.D. Grant & V.E. Grant	Little Gilia	AH	.		Polemoniaceae	U
<i>Gilia ochroleuca</i> ssp. <i>bizonata</i> A. & V. Grant	Desert Gilia	AH	.		Polemoniaceae	O
<i>Gilia sinuata</i> Benth.	Sinuate Gilia	AH	.		Polemoniaceae	R
<i>Gilia tetrabreccia</i> A. & V. Grant	Mount Piños Gilia	AH	.		Polemoniaceae	S
<i>Gilia transmontana</i> (H. Mason & A. Grant) A. & V. Grant	Desert Gilia	AH	.		Polemoniaceae	R
<i>Gilia tricolor</i> ssp. <i>diffusa</i> (Congdon) H. Mason & A.D. Grant	Birds-eye or Tricolor Gilia	AH	.		Polemoniaceae	R
<i>Glycyrrhiza lepidota</i> (Nutt.) Pursh	American Licorice	PH	FAC		Fabaceae	S
<i>Gnaphalium palustre</i> Nuttall	Lowland Cudweed	AH	FACW		Asteraceae	O
<i>Grayia spinosa</i> (Hook.) Moq.	Hop-Sage	S	.		Chenopodiaceae	R
<i>Greenocharis circumsissa</i> (Hook. & Arn.) Ryd. var. <i>circumsissa</i>	Greenocharis	AH	.		Boraginaceae	C
<i>Gutierrezia californica</i> (DC.) Torrey & A. Gray	California Matchweed	S	.		Asteraceae	O
<i>Gutierrezia sarothrae</i> (Pursh) Britton & Rusby	Broom Snakeweed	S	.		Asteraceae	S
<i>Hazardia squarrosa</i> var. <i>obtusata</i> (Greene) Jepson	Prickly Sawtooth Goldenbush	S	.		Asteraceae	C
<i>Helianthus annuus</i> L.	Common Sunflower	AH	FACU		Asteraceae	C
<i>Heliotropium curassavicum</i> var. <i>oculatum</i> (A. Heller) Tidestr.	Alkali Heliotrope	PH	FACU		Heliotropiaceae	C
<i>Hesperocnide tenella</i> Torrey	Western Nettle	AH	.		Urticaceae	S
<i>Hesperoyucca whipplei</i> ssp. <i>cespitosa</i> (M.E. Jones) A.L. Haines	Clumping Our Lord's Candle	S	.		Agavaceae	C
<i>Heterotheca sessiliflora</i> ssp. <i>echioides</i> (Benth.) Semple	Sessileflower False Goldenaster	PH	.		Asteraceae	O
* <i>Hirschfeldia incana</i> (L.) Lagr.-Fossat *	Summer Mustard	PH	(FACU)		Brassicaceae	C
<i>Hollisteria lanata</i> S. Watson	Hollisteria	AH	.		Polygonaceae	R
* <i>Hordeum murinum</i> ssp. <i>glaucum</i> (Steudel) Tzvelev *	Summer Barley	AG	FACU		Poaceae	C
* <i>Hordeum murinum</i> ssp. <i>leporinum</i> (Link) Arcang. *	Hare Barley	AG	FACU		Poaceae	C
* <i>Hordeum vulgare</i> var. <i>trifurcatum</i> (Schlecht) Alefeld *	Beardless Barley	AG	.		Poaceae	R
<i>Hosackia oblongifolia</i> Benth. var. <i>oblongifolia</i>	Stream Trefoil	PH	OBL		Fabaceae	O
<i>Hydrocotyle verticillata</i> Thunb.	Marsh Pennywort	PH	OBL		Araliaceae	R
<i>Isocoma acradenia</i> var. <i>bracteosa</i> (E. Greene) G.L. Nesom	Desert Goldenbush	S	FACU		Asteraceae	R
<i>Iva axillaris</i> ssp. <i>robustior</i> (Hooker) Bassett	Poverty Weed	PH	FAC		Asteraceae	C
<i>Jensia yosemitana</i> (Parry ex A. Gray) B.G. Baldwin	Yosemite Tarplant	AH	FACU		Asteraceae	R
<i>Juncus balticus</i> Willd. ssp. <i>balticus</i>	Baltic Rush	PG	FACW		Juncaceae	O
<i>Juncus effusus</i> ssp. <i>austrocalifornicus</i> H.L. Lint ex Zita	Pacific Rush	PG	FACW		Juncaceae	U
<i>Juncus macrophyllus</i> Cov.	Large-leaf Rush	PG	FACW		Juncaceae	O
<i>Juncus mexicanus</i> Willd. ex Schultes & Schultes.f.	Mexican Rush, Wire Grass	PG	FACW		Juncaceae	C
<i>Juncus rugulosus</i> Engelm.	Wrinkled Rush	PG	OBL		Juncaceae	S
<i>Juncus xiphioides</i> E. Meyer	Iris-leaved Rush	PG	OBL		Juncaceae	C
<i>Juniperus californica</i> Carrière	California Juniper	S	.		Cupressaceae	C
<i>Keckiella breviflora</i> (Lindley) I.M. Johnston var. <i>breviflora</i>	Stubflower Penstemon	S	.		Plantaginaceae	C
<i>Keckiella ternata</i> var. <i>septentrionalis</i> (Munz & Johnston) N. Holmgren	Blue-stemmed Bush Penstemon	S	.		Plantaginaceae	C
<i>Krascheninnikovia lanata</i> (Pursh) A.D.J. Meeuse & Smit	Winter Fat	S	.		Chenopodiaceae	U
* <i>Lactuca serriola</i> L. *	Prickly Wild Lettuce	AH	FACU		Asteraceae	C
<i>Lagophylla ramosissima</i> Nutt. ssp. <i>ramosissima</i>	Common Hareleaf	AH	.		Asteraceae	C
<i>Lastarriaea coriacea</i> (Goodman) Hoover	Lastarriaea	AH	.		Polygonaceae	U
<i>Lasthenia californica</i> Lindley ssp. <i>californica</i>	California Goldfields	AH	FACU		Asteraceae	C

Vascular Plants of the Ventura County Portion of the Cuyama Badlands Floristic Bioregion

By David L. Magney

Scientific Name	Common Name	Habit	Wetland Indicator		Family	Abundance Status
			Status	Family		
<i>Lasthenia ferrisiae</i> Ornduff	Ferris Goldfields	AH	OBL	Asteraceae	R, 4.2	
<i>Lasthenia gracilis</i> (DC.) Greene	Common Goldfields	AH	(FACU)	Asteraceae	C	
<i>Lasthenia microglossa</i> (A. DC.) E. Greene	Small-rayed Goldfields	AH	.	Asteraceae	R	
<i>Layia glandulosa</i> (Hook.) Hook. & Arn. ssp. <i>glandulosa</i>	White Layia	AH	.	Asteraceae	C	
<i>Layia glandulosa</i> ssp. <i>lutea</i> Keck	Yellow Layia	AH	.	Asteraceae	U	
<i>Layia heterotricha</i> (DC.) Hooker & Arnott	Pale-yellow Layia	AH	FAC	Asteraceae	S, 1B.1	
<i>Layia pentachaeta</i> ssp. <i>albida</i> Keck	White Tidy Tips	AH	.	Asteraceae	R	
<i>Layia platyglossa</i> (Fischer & C. Meyer) A. Gray	Tidy Tips	AH	.	Asteraceae	O	
* <i>Lepidium appelianum</i> Al-Shehbaz [<i>Cardaria pubescens</i>] *	White-top	PH	UPL	Brassicaceae	S	
* <i>Lepidium latifolium</i> L. *	Broadleaf Peppergrass	PH	FAC	Brassicaceae	S	
<i>Lepidium nitidum</i> Torrey & A. Gray	Common Peppergrass	AH	FAC	Brassicaceae	C	
* <i>Lepidium perfoliatum</i> L. *	Clasping Peppergrass	BH	FACU	Brassicaceae	R	
<i>Lepidospartum squamatum</i> (A. Gray) A. Gray	Scalebroom	S	FACU	Asteraceae	C	
<i>Leptosiphon chrysanthus</i> J.M. Porter & R. Patt. ssp. <i>chrysanthus</i>	Desert Gold	AH	.	Polemoniaceae	C	
<i>Leptosiphon liniflorus</i> (Bentham) J.M. Porter & L.A. Johnson	Linanthus	AH	.	Polemoniaceae	O	
<i>Leptosiphon parviflorus</i> Bentham	Yellow Linanthus	AH	.	Polemoniaceae	C	
<i>Leptosyne bigelovii</i> (A.Gray) A.Gray	Bigelow Coreopsis	AH	.	Asteraceae	C	
<i>Leptosyne calliopsidea</i> (DC.) A.Gray	Leafy-stemmed Coreopsis	AH	.	Asteraceae	U	
<i>Lessingia glandulifera</i> A. Gray var. <i>glandulifera</i>	Sticky Lessingia	AH	.	Asteraceae	O	
<i>Lessingia pectinata</i> var. <i>tenuipes</i> (J.T. Howell) Markos	Sticky Lessingia	AH	.	Asteraceae	R	
<i>Lessingia tenuis</i> (Gray) Cov.	Tenuous Lessingia	AH	.	Asteraceae	O, 4.3	
<i>Lilium humboldtii</i> ssp. <i>ocellatum</i> (Kellogg) Thorne	Ocellated Humboldt Lily	PH	.	Liliaceae	O, 4.2	
<i>Linanthus bigelovii</i> (Gray) Greene	Bigelow Linanthus	AH	.	Polemoniaceae	R	
<i>Linanthus dichotomus</i> Benth. ssp. <i>dichotomus</i>	Evening Snow	AH	.	Polemoniaceae	S	
<i>Lithophragma cymbalaria</i> T. & G.	Mission Star	PH	.	Saxifragaceae	S	
<i>Lithophragma parviflorum</i> (Hook.) T. & G. var. <i>parviflorum</i>	Prairie Star	PH	.	Saxifragaceae	U	
<i>Loeflingia squarrosa</i> Nuttall var. <i>squarrosa</i>	California Loeflingia	AH	.	Caryophyllaceae	S	
<i>Loeseliastrum schottii</i> S. Timbrook	Schott Loeseliastrum	AH	.	Polemoniaceae	R	
<i>Logfia filaginoides</i> (Hook. & Arn.) Morefield	California Filago	AH	.	Asteraceae	C	
* <i>Logfia gallica</i> (L.) Coss. & Germ. *	Woolly Filago	AH	.	Asteraceae	S	
* <i>Lolium multiflorum</i> Lam. *	Italian Ryegrass	AG	FAC	Poaceae	C	
<i>Lomatium macrocarpum</i> (T. & G.) J. Coulter & Rose	Large-fruited Lomatium	PH	.	Apiaceae	U	
<i>Lomatium mohavense</i> (Coulter & Rose) Coult. & Rose ssp. <i>mohavense</i>	Desert-parsley	PH	.	Apiaceae	O	
<i>Lomatium multifidum</i> (Nutt.) R.P. McNeill & Darrach	Carrotleaf Biscuitroot	PH	.	Apiaceae	U	
<i>Lomatium utriculatum</i> (T. & G.) Coulter & Rose	Foothill Lomatium	PH	.	Apiaceae	O	
<i>Lonicera subspicata</i> var. <i>denudata</i> Rehder	Southern Honeysuckle	S	.	Caprifoliaceae	C	
* <i>Lotus corniculatus</i> L. *	Birdsfoot Trefoil	PH	FAC	Fabaceae	S	
<i>Lupinus albicaulis</i> Hooker	Whitestem Lupine	PH	.	Fabaceae	U	
<i>Lupinus albifrons</i> Benth. var. <i>albifrons</i>	Silver Bush Lupine	S	.	Fabaceae	C	
<i>Lupinus albifrons</i> var. <i>austromontanus</i> (A.A. Heller) Jeps.	Southern Mountain Bush Lupine	S	.	Fabaceae	O	
<i>Lupinus albifrons</i> var. <i>collinus</i> E. Greene	Dwarf Silver Bush Lupine	S	.	Fabaceae	R	
<i>Lupinus albifrons</i> var. <i>hallii</i> (Abrams) Jeps.	Hall Bush Lupine	S	.	Fabaceae	C	
<i>Lupinus benthamii</i> Heller var. <i>benthamii</i>	Spider Lupine	AH	.	Fabaceae	R	
<i>Lupinus bicolor</i> Lindley	Bicolored or Miniature Lupine	AH	.	Fabaceae	C	
<i>Lupinus concinnus</i> J. Agardh spp. <i>concinnus</i>	Bajada Lupine	AH	.	Fabaceae	C	

Vascular Plants of the Ventura County Portion of the Cuyama Badlands Floristic Bioregion

By David L. Magney

Scientific Name	Common Name	Habit	Wetland Indicator		Family	Abundance Status
			Status	Family		
<i>Lupinus concinnus</i> spp. <i>optatus</i> D. Dunn	Bajada Lupine	AH	.		Fabaceae	R
<i>Lupinus excubitus</i> M.E. Jones var. <i>excubitus</i>	Grape Soda Lupine	S	.		Fabaceae	O
<i>Lupinus formosus</i> Greene var. <i>formosus</i>	Summer Bush Lupine	PH	.		Fabaceae	C
<i>Lupinus formosus</i> var. <i>robustus</i> C.P. Smith	Summer Bush Lupine	PH	.		Fabaceae	U
<i>Lupinus microcarpus</i> var. <i>densiflorus</i> (Benth) Jeps.	Densely Red-flowered Lupine	AH	.		Fabaceae	S
<i>Lupinus microcarpus</i> var. <i>horizontalis</i> (A.A. Heller) Jeps.	Prostrate Red-flowered Lupine	AH	.		Fabaceae	O
<i>Lupinus microcarpus</i> Sims var. <i>microcarpus</i>	Red-flowered Lupine	AH	.		Fabaceae	C
<i>Lupinus sparsiflorus</i> Benth. ssp. <i>sparsiflorus</i>	Few-flowered Lupine	AH	.		Fabaceae	C
<i>Lycium andersonii</i> Gray	Anderson Desert-thorn	S	.		Solanaceae	R
<i>Madia elegans</i> D. Don ssp. <i>elegans</i>	Common Tarplant or Madia	AH	.		Asteraceae	C
<i>Malacothamnus davidsonii</i> (B.L. Rob.) Greene	Davidson's Bushmallow	S	.		Malvaceae	R
<i>Malacothamnus orbiculatus</i> (E. Greene) E. Greene	Roundleaf Bushmallow	S	.		Malvaceae	U
<i>Malacothrix californica</i> DC. var. <i>californica</i>	California Cliff-aster	PH	.		Asteraceae	S
<i>Malacothrix coulteri</i> Gray	Snake-head	AH	.		Asteraceae	R
<i>Malacothrix floccifera</i> (DC.) Blake	Woolly or Flobose Dandelion	AH	.		Asteraceae	O
<i>Malacothrix glabrata</i> A. Gray	Desert Dandelion	AH	.		Asteraceae	R
* <i>Malva neglecta</i> Wallr. *	Common Mallow, Cheeses	A/BH	.		Malvaceae	R
* <i>Malva parviflora</i> L. *	Cheeseweed	AH	.		Malvaceae	C
<i>Marah fabacea</i> (Naudin) Greene	California Man-root	PV	.		Cucurbitaceae	C
* <i>Marrubium vulgare</i> L. *	White Horehound	S		FACU	Lamiaceae	C
<i>Matricaria discoidea</i> DC.	Pineapple Weed	AH		FACU	Asteraceae	O
<i>Melica californica</i> Scribner var. <i>californica</i>	California Melic Grass	PG	.		Poaceae	U
<i>Melica imperfecta</i> Trin.	Coast Melic Grass	PG	.		Poaceae	C
* <i>Melilotus indicus</i> (L.) All. *	Sourclover, Yellow Sweetclover	AH		FACU	Fabaceae	C
<i>Mentzelia affinis</i> Greene	Orange-spotted Stickleaf	AH	.		Loasaceae	S
<i>Mentzelia eremophila</i> (Jeps.) H.J. Thomps. & J.E. Roberts	Pinyon Blazing Star	AH	.		Loasaceae	4.2, R
<i>Mentzelia gracilentia</i> T. & G.	Slender Stickleaf	AH	.		Loasaceae	U
<i>Mentzelia laevicaulis</i> (Hooker) Torrey & Gray	Blazing Star	AH	.		Loasaceae	O
<i>Mentzelia montana</i> (Davidson) Davidson ssp. <i>montana</i>	Mountain Stickleaf	AH	.		Loasaceae	S
<i>Mentzelia pectinata</i> Kellogg	Stickleaf	AH	.		Loasaceae	S
<i>Mentzelia veatchiana</i> Kellogg	Veatch Stickleaf	AH	.		Loasaceae	C
<i>Mirabilis multiflora</i> var. <i>pubescens</i> S. Watson	Froebel Four O'Clock	PH	.		Nyctaginaceae	R
<i>Monardella breweri</i> Gray var. <i>breweri</i>	Brewer Coyote Mint	AH	.		Lamiaceae	O
<i>Monardella breweri</i> var. <i>lanceolata</i> (Gray) A.C. Sanders & Elvin	Mustang Mint	AH	.		Lamiaceae	C
<i>Monardella linoides</i> ssp. <i>oblonga</i> (Greene) Abrams	Flax-leaved Horsemint	PH		FACU	Lamiaceae	C, 1B.3, FS
<i>Monolopia lanceolata</i> Nuttall	Lanceleaf Hilltop Daisy	AH	.		Asteraceae	U
<i>Monolopia major</i> DC.	Cupped Daisy	AH	.		Asteraceae	R
<i>Mucrona perfoliata</i> (Gray) A.A. Heller var. <i>perfoliata</i>	Perfoliate Spineflower	AH	.		Polygonaceae	R
<i>Muhlenbergia asperifolia</i> (Nees & Meyen) Parodi	Scratchgrass	PG		FACW	Poaceae	S
<i>Muilla maritima</i> (Torrey) S. Watson	Common Muilla	PG	.		Themidaceae	O
<i>Myosurus minimus</i> L.	Common Mousetails	AH		OBL	Ranunculaceae	R
<i>Myriopteris</i> [<i>Cheilanthes</i>] <i>covillei</i> (Maxon) A. Löve & D. Löve	Coville Lip-fern	PF	.		Pteridaceae	C
<i>Nama californica</i> (Gray) J.D. Bacon	Lemmon California Waterleaf	AH	.		Namaceae	O
<i>Navarretia atractyloides</i> (Benth.) Hook. & Arn.	Navarretia	AH	.		Polemoniaceae	S
<i>Nemacladus californicus</i> (A. Gray) Morin	Parishella	AH	.		Lobeliaceae	R

Vascular Plants of the Ventura County Portion of the Cuyama Badlands Floristic Bioregion

By David L. Magney

Scientific Name	Common Name	Habit	Wetland Indicator		Family	Abundance Status
			Status	Family		
<i>Nemacladus capilaris</i> Greene	Common Nemacladus	AH	.		Lobeliaceae	R
<i>Nemacladus gracilis</i> Eastw.	Slender Nemacladus	AH	.		Lobeliaceae	R
<i>Nemacladus orientalis</i> (McVaugh) Morin	Western Sticky Nemacladus	AH	.		Lobeliaceae	R
<i>Nemacladus secundiflorus</i> var. <i>robbinsii</i> Morin	Robbins' Nemacladus	AH	.		Lobeliaceae	U, 1B.2
<i>Nemacladus sigmoideus</i> G.T. Robbins	Thread Stem	AH	.		Lobeliaceae	R
<i>Nemophila menziesii</i> Hook. & Arn. var. <i>menziesii</i>	Baby Blue-eyes	AH	.		Hydrophyllaceae	O
<i>Nemophila pedunculata</i> Benth.	Little-foot Baby Blue-eyes	AH	FAC		Hydrophyllaceae	C
<i>Nemophila pulchella</i> var. <i>fremontii</i> (A.D.E. Elmer) Constance	Fremont Baby Blue-eyes	AH	.		Hydrophyllaceae	R
<i>Nicotiana quadrivalis</i> Pursh var. <i>quadrivalis</i>	Indian Tobacco	AH	FACU		Solanaceae	S
* <i>Oenothera sinuosa</i> (Ser.) W.L. Wagner & Hoch [<i>Gaura sinuata</i> Ser.] *	Wavy-leaved Gaura	PH	.		Onagraceae	U
<i>Opuntia phaeacantha</i> Engelm.	Engelmann Prickly Pear	S	.		Cactaceae	R
<i>Osmorhiza brachypoda</i> Torrey	Sweet Cicely	PH	.		Apiaceae	C
<i>Oxytheca perfoliata</i> T. & G.	Perfoliate Oxytheca	AH	.		Polygonaceae	U
<i>Packera breweri</i> (Burt Davy) W.A. Weber & Löve	Brewer Butterweed or Groundsel	PH	.		Asteraceae	S
<i>Papaver heterophyllum</i> (Benth.) Greene	Wind Poppy	AH	.		Papaveraceae	U
<i>Pectocarya anisocarpa</i> Veno	Unequal-fruited Pectocarya	AH	.		Boraginaceae	R
<i>Pectocarya heterocarpa</i> I.M. Johnston	Two-faced Pectocarya	AH	.		Boraginaceae	R
<i>Pectocarya linearis</i> ssp. <i>ferocula</i> (I.M. Johnston) Thorne	Linear Pectocarya	AH	.		Boraginaceae	O
<i>Pectocarya penicillata</i> (Hook. & Arn.) A. DC.	Winged Pectocarya	AH	.		Boraginaceae	O
<i>Pectocarya setosa</i> Gray	Setose Pectocarya	AH	.		Boraginaceae	C
<i>Pediomelum californicum</i> (S. Watson) Rydb.	California Indian Breadroot	PH	.		Fabaceae	O
<i>Pellaea mucronata</i> (D.C. Eaton) D.C. Eaton in Emory var. <i>mucronata</i>	Birdsfoot Cliffbrake or Fern	PF	.		Pteridaceae	C
<i>Penstemon centranthifolius</i> Bentham	Scarlet Bugler	PH	.		Plantaginaceae	C
<i>Penstemon grinnellii</i> Eastwood var. <i>grinnellii</i>	Grinnell Beardtongue	PH	.		Plantaginaceae	U
<i>Penstemon grinnellii</i> var. <i>scrophularioides</i> (M.E. Jones) N. Holmgren	Figwort Beardtongue	PH	.		Plantaginaceae	S
<i>Penstemon heterophyllus</i> Lindley var. <i>heterophyllus</i>	Mountain Penstemon	PH	.		Plantaginaceae	C
<i>Pentachaeta fragilis</i> Brandegee	Fragile Pentachaeta	AH	FAC		Asteraceae	U, 4.3
<i>Pentagramma triangularis</i> (Kaulf.) Yatskievych, Windham, & E. Wollenweber ssp. <i>triangularis</i>	Goldenback Fern	PF	.		Pteridaceae	C
<i>Perideridia parishii</i> ssp. <i>latifolia</i> (Gray) Chuang & Constance	Parish Yampah	PH	FAC		Apiaceae	S
<i>Perideridia pringlei</i> (J.M. Coulter & Rose) A. Nelson & J.F. Macbr.	Adobe or Pringle Yampah	PH	.		Apiaceae	O, 4.3
<i>Peritoma arborea</i> var. <i>globosa</i> (Coville) H.H. Iltis	Bladderpod	S	.		Cleomaceae	S
<i>Phacelia affinis</i> Gray var. <i>affinis</i>	Limestone Phacelia	AH	.		Hydrophyllaceae	S
<i>Phacelia brachyloba</i> (Benth.) Gray	Short-lobed Phacelia	AH	.		Hydrophyllaceae	C
<i>Phacelia cicutaria</i> Greene var. <i>cicutaria</i>	Caterpillar Phacelia	AH	.		Hydrophyllaceae	S
<i>Phacelia cicutaria</i> var. <i>hispida</i> (A. Gray) J.T. Howell	Hispid Caterpillar Phacelia	AH	.		Hydrophyllaceae	C
<i>Phacelia ciliata</i> Benth. var. <i>ciliata</i>	Ciliate Phacelia	AH	.		Hydrophyllaceae	O
<i>Phacelia curvipes</i> S. Watson var. <i>curvipes</i>	Washoe Phacelia	AH	.		Hydrophyllaceae	O
<i>Phacelia distans</i> Benth.	Wild Heliotrope	AH	OBL		Hydrophyllaceae	C
<i>Phacelia douglasii</i> (Benth.) Torrey var. <i>douglasii</i>	Douglas Phacelia	AH	.		Hydrophyllaceae	O
<i>Phacelia egena</i> (Brand) J.T. Howell	Rock Phacelia	PH	.		Hydrophyllaceae	C
<i>Phacelia fremontii</i> Torrey	Fremont Phacelia	AH	.		Hydrophyllaceae	C
<i>Phacelia imbricata</i> Greene ssp. <i>imbricata</i>	Mountain Phacelia	PH	.		Hydrophyllaceae	C
<i>Phacelia mutabilis</i> Greene	Changeable Phacelia	AH	.		Hydrophyllaceae	R
<i>Phacelia tanacetifolia</i> Benth.	Tansy Phacelia	AH	.		Hydrophyllaceae	C

Vascular Plants of the Ventura County Portion of the Cuyama Badlands Floristic Bioregion

By David L. Magney

Scientific Name	Common Name	Habit	Wetland Indicator		Family	Abundance Status
			Status	Family		
<i>Phlox gracilis</i> Greene	Slender Phlox	AH	FACU		Polemoniaceae	O
<i>Pholistoma membranaceum</i> (Benth.) Constance	White Fiesta Flower	AH	.		Hydrophyllaceae	U
<i>Phoradendron bolleanum</i> (Seem.) Eichler	Fir Mistletoe	PH	.		Viscaceae	O
<i>Phoradendron californicum</i> Nutt.	Desert Mistletoe	PH	.		Viscaceae	R
<i>Phoradendron leucarpum</i> ssp. <i>tomentosum</i> (DC.) J.R. Abbott & R.L. Thomps.	Oak or Hairy Mistletoe	PH	.		Viscaceae	C
<i>Phragmites australis</i> (Cav.) Steudel	Common Reed	PG	FACW		Poaceae	U
<i>Pickeringia montana</i> Nutt. var. <i>montana</i>	Chaparral Pea	S	.		Fabaceae	U
<i>Pinus monophylla</i> Torrey & Frémont	Singleleaf Pinyon Pine	T	.		Pinaceae	C
* <i>Pistacia vera</i> L. *	Pistachio	T	.		Anacardiaceae	R
<i>Plagiobothrys arizonicus</i> (Gray) Gray	Arizona Popcornflower	AH	.		Boraginaceae	U
<i>Plagiobothrys canescens</i> Benth. var. <i>canescens</i>	Valley or Bracted Popcornflower	AH	.		Boraginaceae	S
<i>Plagiobothrys collinus</i> var. <i>fulvescens</i> (I.M. Johnston) Higgins	Popcornflower	AH	.		Boraginaceae	U
<i>Plagiobothrys nothofulvus</i> (A. Gray) A. Gray	Rusty Popcornflower	AH	FAC		Boraginaceae	C
<i>Platystemon californicus</i> Benth. [var. <i>californicus</i>]	Cream Cups	AH	.		Papaveraceae	O
<i>Plectritis ciliosa</i> ssp. <i>insignis</i> (Suksd.) D. Morey	Petite Long-spurred Plectritis	AH	FACU		Valerianaceae	U
<i>Pluchea odorata</i> (L.) Cass.	Saltmarsh Fleabane	P/AH	FACW		Asteraceae	S
* <i>Poa bulbosa</i> L. ssp. <i>bulbosa</i> *	Bulbose Bluegrass	PG	FACU		Poaceae	R
* <i>Poa bulbosa</i> ssp. <i>vivapara</i> (Koeler) Arcang. *	Bulbose Bluegrass	PG	FACU		Poaceae	U
<i>Poa secunda</i> J.S. Presl ssp. <i>secunda</i>	One-sided Bluegrass	PG	FACU		Poaceae	C
<i>Poa tenerrima</i> Scribn.	Delicate Bluegrass	PG	.		Poaceae	R
<i>Polemonium micranthum</i> Benth.	Tiny Phlox	AH	FACU		Polemoniaceae	U
* <i>Polygonum aviculare</i> ssp. <i>depressum</i> Meisner in A.P. DC. & A.L.P.P. DC. *	Common Knotweed, Doorweed	AH	FACW		Polygonaceae	O
<i>Pseudotsuga macrocarpa</i> (Vasey) Mayr	Bigcone Spruce or False Hemlock	T	.		Pinaceae	C
<i>Pterostegia drymarioides</i> Fischer & C. Meyer	Fairy Mist	AH	.		Polygonaceae	C
<i>Purshia tridentata</i> var. <i>glandulosa</i> (Curran) M.E. Jones	Antelope Bush	S	.		Rosaceae	S
<i>Pyrocoma racemosa</i> var. <i>sessiliflora</i> (Greene) G.K. Br. & D.J. Keil	Clustered Goldenweed	S	FAC		Asteraceae	R
<i>Quercus Xalvordiana</i> Eastwood	Alvord Oak	S/T	.		Fagaceae	R
<i>Quercus berberidifolia</i> Leibm.	California Scrub Oak	S	.		Fagaceae	C
<i>Quercus chrysolepis</i> Liebm.	Canyon Live or Goldencup Oak	T	.		Fagaceae	C
<i>Ranunculus cymbalaria</i> Pursh	Desert Buttercup	PH	(OBL)		Ranunculaceae	S
<i>Rhamnus ilicifolia</i> Kellogg	Hollyleaf Redberry, Buckthorn	S	.		Rhamnaceae	C
<i>Ribes quercetorum</i> Greene	Oak Gooseberry	S	.		Grossulariaceae	S
<i>Romneya trichocalyx</i> Eastwood	Hairy Matilija Poppy	S	.		Papaveraceae	C
<i>Rorippa curvisiliqua</i> (Hooker) Bessey ex Britton	Curved-pod Watercress	AH	OBL		Brassicaceae	R
<i>Rosa californica</i> Cham. & Schltldl.	California Wild Rose	S	FAC		Rosaceae	C
<i>Rumex hymenosepalus</i> Torrey	Wild Rhubarb, Canaigre	PH	.		Polygonaceae	O
<i>Rumex salicifolius</i> J.A. Weinm. [var. <i>salicifolius</i>]	Willow Dock	PH	FACW		Polygonaceae	C
<i>Sabulina californica</i> (A. Gray) Dellenb.& Kabereit	California Sandwort	AH	.		Caryophyllaceae	R
<i>Sabulina douglasii</i> (Fenzl ex T. & G.) Dellenb.& Kabereit	Douglas Sandwort	AH	.		Caryophyllaceae	C
<i>Salix exigua</i> var. <i>hindsiana</i> (Bentham) Dorn	Hind's Willow	S	FACW		Salicaceae	C
<i>Salix laevigata</i> Bebb.	Red Willow	T	FACW		Salicaceae	C
<i>Salix lasiolepis</i> Benth. var. <i>lasiolepis</i>	Arroyo Willow	T	FACW		Salicaceae	C
<i>Salix melanopsis</i> Nuttall	Dusky Willow	S	OBL		Salicaceae	R
<i>Saltugilia australis</i> (Mason & A. Grant) L.A. Johnson	Southern Woodland-gilia	AH	.		Polemoniaceae	R
<i>Salvia carduacea</i> Benth.	Thistle Sage	PH	.		Lamiaceae	R

Vascular Plants of the Ventura County Portion of the Cuyama Badlands Floristic Bioregion

By David L. Magney

Scientific Name	Common Name	Habit	Wetland Indicator		Abundance Status
			Status	Family	
<i>Salvia columbariae</i> Benth.	Chia	AH	.	Lamiaceae	C
<i>Schoenoplectus pungens</i> var. <i>badius</i> (J. Presl & C. Presl) S.G. Smith	Common Threesquare	PG	OBL	Cyperaceae	U
<i>Senecio flaccidus</i> var. <i>monoensis</i> (Greene) B.L.Turner & T.M.Barkley	Mono Butterweed	S	.	Asteraceae	R
<i>Sidalcea neomexicana</i> Gray	Salt Spring Checkermallow	PH	FACW	Malvaceae	U, 2.2
<i>Sidalcea sparsifolia</i> (C.L. Hitchc.) S.R. Hill	Few-leaved Globemallow	S	.	Malvaceae	O
<i>Silene laciniata</i> ssp. <i>californica</i> (Durand) J.K. Morton	California Indian Pink	PH	.	Caryophyllaceae	U
* <i>Sisymbrium altissimum</i> L. *	Tumble Mustard	AH	FACU	Brassicaceae	O
* <i>Sisymbrium orientale</i> L. *	Eastern Mustard	AH	.	Brassicaceae	S
<i>Solanum xanti</i> A. Gray var. <i>xanti</i>	Chaparral Nightshade	S	.	Solanaceae	C
* <i>Sonchus asper</i> (L.) Hill ssp. <i>asper</i> *	Prickly Sow-thistle	AH	FAC	Asteraceae	C
* <i>Spartium junceum</i> L. *	Spanish Broom	S	.	Fabaceae	O
<i>Stachys rigida</i> Benth. var. <i>rigida</i>	Rigid Hedge Nettle	PH	FACW	Lamiaceae	S
<i>Stephanomeria pauciflora</i> (Nutt.) Nelson var. <i>pauciflora</i>	Wire-lettuce	PH	.	Asteraceae	S
<i>Stephanomeria virgata</i> Benth. ssp. <i>virgata</i>	Twiggy Wreath Plant	AH	.	Asteraceae	C
<i>Stylocline gnaphaloides</i> Nuttall	Everlasting Nest Straw	AH	.	Asteraceae	S
<i>Symphoricarpos rotundifolius</i> var. <i>parishii</i> (Rydb.) Dempster	Parish Snowberry	S	.	Caprifoliaceae	C
<i>Symphyotrichum chilense</i> (Nees) G.L. Nesom	Common California Aster	AH	FAC	Asteraceae	S
<i>Symphyotrichum subulatum</i> var. <i>parviflorum</i> (Nees) S.D. Sundb.	Annual Saltmarsh Aster	AH	OBL	Asteraceae	O
<i>Syntrichopappus lemmonii</i> (A. Gray) A. Gray	Lemmon's Xerasid	AH	.	Asteraceae	R, 4.3
* <i>Tamarix chinensis</i> Lour. *	Fivestamen Tamarisk	S	FAC	Tamaricaceae	R
* <i>Tamarix ramosissima</i> Ledeb. *	Tamarisk	T/S	(FACW)	Tamaricaceae	O
<i>Tetrapteron graciliflorum</i> (Hook. & Arn.) W.L. Wagner & Hoch	Hill Sun-cup	AH	.	Onagraceae	U
<i>Tetrapteron palmeri</i> (S. Watson) W.L. Wagner & Hoch	Palmer Primrose	AH	.	Onagraceae	U
<i>Thermopsis californica</i> var. <i>argentata</i> (Greene) Chen & Turner	Silvery False-Lupine	AH	.	Fabaceae	S, 4.3
<i>Trichostema ovatum</i> Curran	Ovate Bluecurls	AH	.	Lamiaceae	R
<i>Trifolium albopurpureum</i> T. & G. [var. <i>albopurpureum</i>]	Rancheria Clover	AH	FACU	Fabaceae	S
* <i>Trifolium dubium</i> Sibth. *	Little Hop Clover	AH	UPL	Fabaceae	R
<i>Trifolium gracilentum</i> T. & G. [var. <i>gracilentum</i>]	Pin-point Clover	AH	.	Fabaceae	O
<i>Trifolium wormskoldii</i> Lehm.	Cows Clover	PH	FACW	Fabaceae	U
<i>Tropidocarpum gracile</i> Hook.	Slender Tropidocarpum	AH	.	Brassicaceae	R
<i>Typha domingensis</i> Pers.	Southern Cattail	PH	OBL	Typhaceae	C
<i>Viola purpurea</i> Kellogg ssp. <i>purpurea</i>	Purple or Mountain Violet	PH	.	Violaceae	S
<i>Viola purpurea</i> ssp. <i>quercetorum</i> (M. Baker & J. Clausen) R.J. Little	Oak Violet	PH	.	Violaceae	S
* <i>Vulpia bromoides</i> (L.) S.F. Gray *	Slender Fescue	AG	FAC	Poaceae	O
* <i>Vulpia myuros</i> (L.) C. Gnelin forma <i>myuros</i> *	Rattail Fescue	AG	FACU	Poaceae	O
<i>Vulpia octoflora</i> var. <i>hirtella</i> (Piper) Henrard	Sixweeks Fescue	AG	UPL	Poaceae	R
<i>Yabea microcarpa</i> (Hooker & Arnott) Koso-Pol.	Yabea	AH	FACU	Apiaceae	S

Notes: Scientific nomenclature follows the Flora of North America Editorial Committee (1993-), *The Jepson Manual* (Baldwin et al. 2012), Baker et al. (2012 for Phrymaceae), Nesom (2012a & 2012b for *Erythranthe*, 2013 for *Diplacus*), Tulig & Nesom (2012 for *Diplacus*), Hasenstab-Lehman & Simpson (2012 for *Cryptantha*), Burge & Zhukovsky (2013 for *Ceanothus vestitus* complex), Schneider (2016 for *Aphyllon*), Colwell et al. (2017 for *Aphyllon*), and Broich (1987 for *Lathyrus vestitus*). Most current taxomomy is followed when changed have occurred since publication of the above listed references. Common names follow Abrams and Ferris (1960), Neihaus and Ripper (1976), and DeGarmo (1980). An "*" indicates non-native taxa that have become naturalized or persist without cultivation.

Habit definitions:

AF = annual fern or fern ally.

PG = perennial grass or graminoid.

Vascular Plants of the Ventura County Portion of the Cuyama Badlands Floristic Bioregion

By David L. Magney

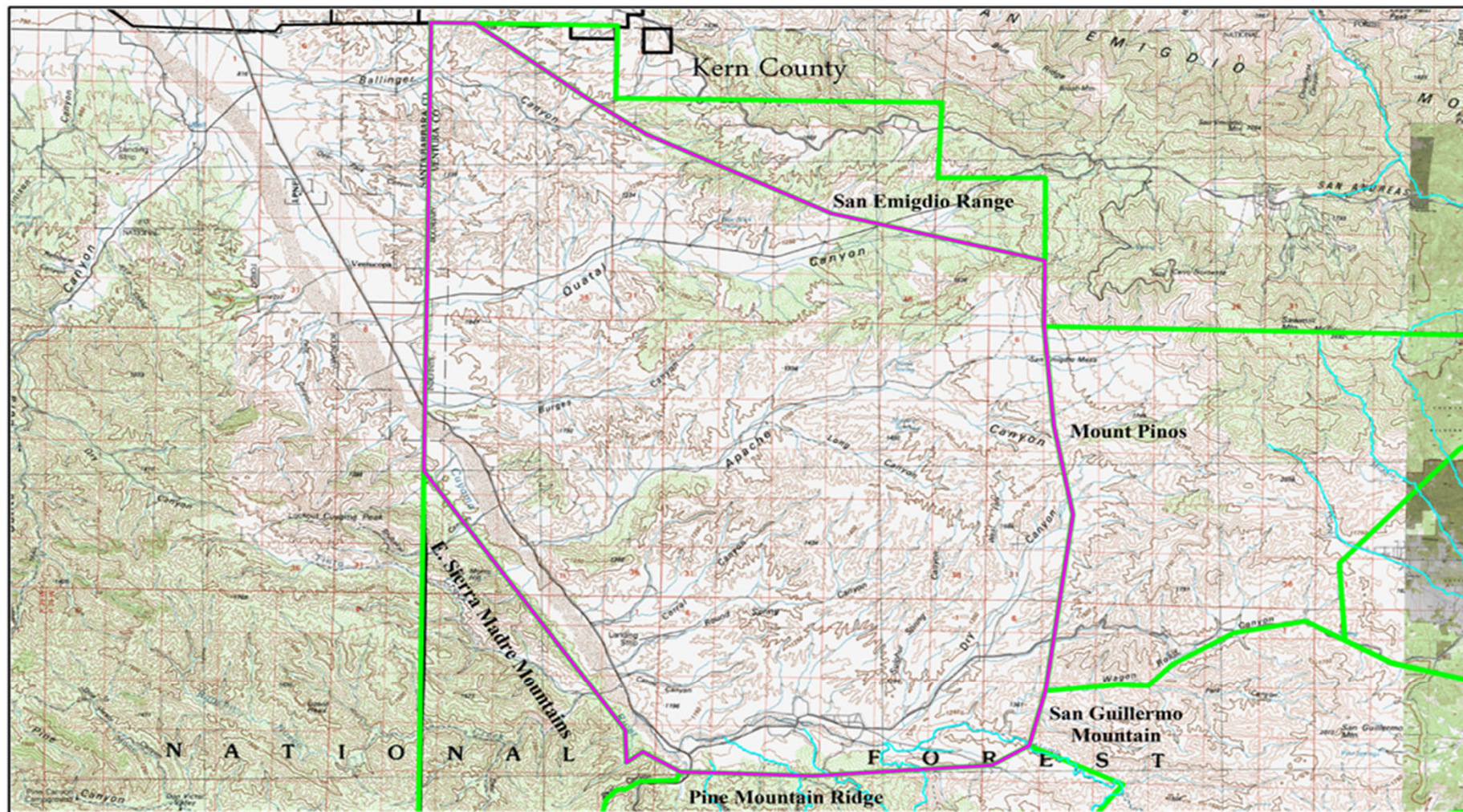
Scientific Name	Common Name	Wetland Indicator			Abundance Status
		Habit	Status	Family	
AG = annual grass or graminoid.	PH = perennial herb.				
AH = annual herb.	PV = perennial vine.				
BH = biennial herb.	S = shrub.				
PF = perennial fern or fern ally.	T = tree.				
Wetland indicator status (Lichvar et al. 2016): OBL = obligate wetland species, occurs almost always in wetlands (>99% probability)					
FACW = facultative wetland species, usually found in wetlands (67-99% probability).					
FAC = facultative species, equally likely to occur in wetlands or nonwetlands (34-67% probability).					
FACU = facultative upland species, usually occur in nonwetlands (67-99% probability).					
A period "." indicates that no wetland indicator status has been given in Lichvar et al. (2016).					
Parentheses around an indicator status indicates the wetland status as suggested by David L. Magney.					
Abundance status definitions:		Listing status definitions:		CNPS Rarity Ranking definitions	
R = Rare (1-5 extant populations known)		FE = Federally listed Endangered		1A = CNPS 1A	
U = Uncommon (6-10 extant populations known)		FT = Federally listed Threatened		1B.x = CNPS 1B	
S = Scattered (11-20 extant populations known)		SE = California listed Endangered		2.x = CNPS 2	
O = Occasional (21-30 extant populations known)		ST = California listed Threatened		3.x = CNPS 3	
C = Common (>30 extant populations known)		SR = California listed Rare		4.x = CNPS 4	
X = Expected but not yet found		FS = Forest Service Sensitive Species			
T = Type Locality					
Developed by David L. Magney 2023. Checklist may be used for educational and nonprofit purposes only.					
Based on voucher specimens at one or more California public herbaria and direct observations by author.					

Vascular Plants of the Ventura County Portion of the Cuyama Badlands Floristic Bioregion

By David L. Magney


Scientific Name	Common Name	Habit	Wetland		Family	Abundance Status
			Indicator	Status		

Topographic map of the Ventura County portion of the Cuyama Badlands Floristic Bioregion.



Cuyama Badlands Floristic Bioregion

 Cuyama Badlands Floristic Bioregion

 Ventura County Bioregions

 Streams

Map created 5 March 2023
 David Magney Environmental Consulting
 P.O. Box 1539, Cedar Ridge, CA 95924
 530/273-1799 - www.magney.org
 Projection: NAD 1983, CA State Plane, Zone V (feet)
 Base Map: Cuyama, Calif. & USGS 100,000 Quadrangle

